

# Phospho-Bcl-2-S70 Rabbit Polyclonal Antibody



CABP0575

---

## Product Information

### Size:

20uL, 50uL, 100uL, 200uL

### Observed MW:

28kDa

### Calculated MW:

22kDa/26kDa

### Applications:

WB IF

### Reactivity:

Human, Rat

## Protein Background

This gene encodes an integral outer mitochondrial membrane protein that blocks the apoptotic death of some cells such as lymphocytes. Constitutive expression of BCL2, such as in the case of translocation of BCL2 to Ig heavy chain locus, is thought to be the cause of follicular lymphoma. Alternative splicing results in multiple transcript variants.

## Immunogen information

### Gene ID:

596

### Uniprot

P10415

### Synonyms:

Bcl-2; PPP1R50; BCL2

## Antibody Information

### Recommended dilutions:

WB 1:500 - 1:2000 IF 1:50 - 1:200

### Source:

Rabbit

### Isotype:

IgG

### Purification:

Affinity purification

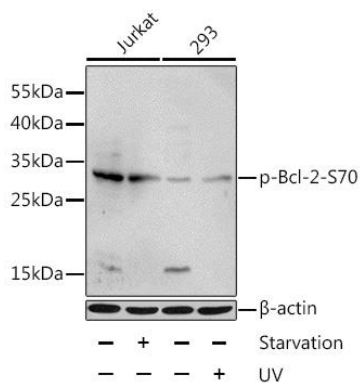
### Immunogen:

A synthetic phosphorylated peptide around S70 of human Bcl-2 (NP\_000624.2).

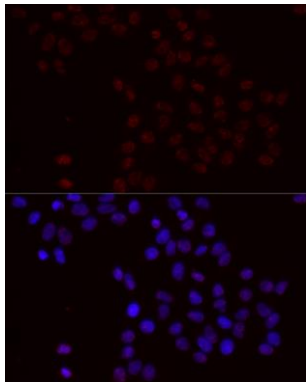
### Storage:

Store at -20°C. Avoid freeze / thaw cycles. Buffer: PBS with 0.02% sodium azide, 50% glycerol, pH7.3.

## Product Images



Western blot analysis of extracts of Jurkat and 293 cells, using Phospho-Bcl2 -S70 antibody (CABP0575) at 1:1000 dilution. Jurkat cells were treated by serum-starvation overnight. 293 cells were treated by UV for 15-30 minutes. Secondary antibody: HRP Goat Anti-Rabbit IgG (H+L) (CABS014) at 1:10000 dilution. Lysates/proteins: 25ug per lane. Blocking buffer: 3% BSA.



Immunofluorescence analysis of HeLa cells using BCL2 antibody (CABP0575) at dilution of 1:100 (40x lens). Blue: DAPI for nuclear staining.