

# Phospho-cdc25C-S216 Rabbit Polyclonal Antibody

## CABP0577



### Product Information

**Size:**

20uL, 50uL, 100uL, 200uL

**Observed MW:**

53kDa

**Calculated MW:**

45kDa/48kDa/50kDa/53kDa

**Applications:**

WB

**Reactivity:**

Human, Rat

### Protein Background

This gene encodes a conserved protein that plays a key role in the regulation of cell division. The encoded protein directs dephosphorylation of cyclin B-bound CDC2 and triggers entry into mitosis. It also suppresses p53-induced growth arrest. Multiple alternatively spliced transcript variants of this gene have been described.

### Immunogen information

**Gene ID:**

995

**Uniprot**

P30307

**Synonyms:**

CDC25C; CDC25; PPP1R60

### Antibody Information

**Recommended dilutions:**

WB 1:500 - 1:2000

**Source:**

Rabbit

**Isotype:**

IgG

**Purification:**

Affinity purification

**Immunogen:**

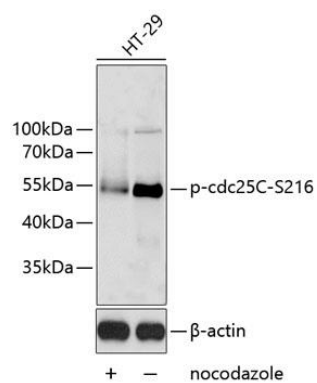
A synthetic phosphorylated peptide around S216 of human cdc25C (NP\_001781.2).

**Storage:**

Store at -20°C. Avoid freeze / thaw cycles. Buffer: PBS with 0.02% sodium azide, 50% glycerol, pH7.3.

## Product Images

---



Western blot analysis of extracts of HT-29 cells, using Phospho-cdc25C-S216 antibody (CABP0577). Secondary antibody: HRP Goat Anti-Rabbit IgG (H+L) (CABS014) at 1:10000 dilution. Lysates/proteins: 25ug per lane. Blocking buffer: 3% BSA.