

# Phospho-Beta-Catenin-S45 Rabbit Polyclonal Antibody

CABP0580



## Product Information

### Size:

20uL, 50uL, 100uL, 200uL

### Observed MW:

92kDa

### Calculated MW:

9kDa/85kDa

### Applications:

WB

### Reactivity:

Human, Mouse, Rat

## Antibody Information

### Recommended dilutions:

WB 1:500 - 1:2000

### Source:

Rabbit

### Isotype:

IgG

### Purification:

Affinity purification

## Protein Background

The protein encoded by this gene is part of a complex of proteins that constitute adherens junctions (AJs). AJs are necessary for the creation and maintenance of epithelial cell layers by regulating cell growth and adhesion between cells. The encoded protein also anchors the actin cytoskeleton and may be responsible for transmitting the contact inhibition signal that causes cells to stop dividing once the epithelial sheet is complete. Finally, this protein binds to the product of the APC gene, which is mutated in adenomatous polyposis of the colon. Mutations in this gene are a cause of colorectal cancer (CRC), pilomatixoma (PTR), medulloblastoma (MDB), and ovarian cancer. Alternative splicing results in multiple transcript variants.

## Immunogen information

### Gene ID:

1499

### Uniprot

P35222

### Synonyms:

CTNNB; MRD19; armadillo; beta Catenin; CTNNB1

### Immunogen:

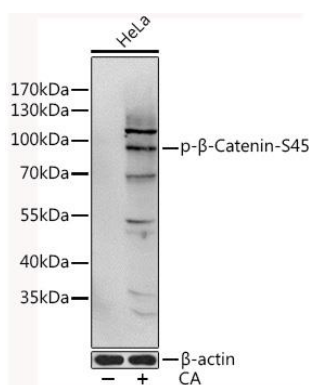
A synthetic phosphorylated peptide around S45 of human CTNNB1 (NP\_001091679).

### Storage:

Store at -20°C. Avoid freeze / thaw cycles. Buffer: PBS with 0.02% sodium azide, 50% glycerol, pH7.3.

## Product Images

---



Western blot analysis of extracts of HeLa cells, using Phospho-β-Catenin-S45 antibody (CABP0580) at 1:1000 dilution. Secondary antibody: HRP Goat Anti-Rabbit IgG (H+L) (CABS014) at 1:10000 dilution. Lysates/proteins: 25ug per lane. Blocking buffer: 3% BSA.