

Phospho-IκBAlpha-S32/36 Rabbit Polyclonal Antibody

CABP0614



Product Information

Size:

20uL, 50uL, 100uL, 200uL

Observed MW:

36kDa

Calculated MW:

35kDa

Applications:

WB

Reactivity:

Human, Mouse

Protein Background

This gene encodes a member of the NF-kappa-B inhibitor family, which contain multiple ankrin repeat domains. The encoded protein interacts with REL dimers to inhibit NF-kappa-B/REL complexes which are involved in inflammatory responses. The encoded protein moves between the cytoplasm and the nucleus via a nuclear localization signal and CRM1-mediated nuclear export. Mutations in this gene have been found in ectodermal dysplasia anhidrotic with T-cell immunodeficiency autosomal dominant disease.

Immunogen information

Gene ID:

4792

Uniprot

P25963

Synonyms:

IKBA; MAD-3; NFKBI; IKB alpha; NFKBIA; EDAID2

Antibody Information

Recommended dilutions:

WB 1:500 - 1:1000

Source:

Rabbit

Isotype:

IgG

Purification:

Affinity purification

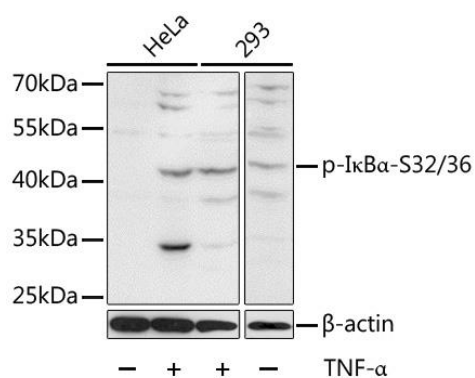
Immunogen:

A synthetic phosphorylated peptide around S32 & S36 of human IκBAlpha (NP_065390.1).

Storage:

Store at -20°C. Avoid freeze / thaw cycles. Buffer: PBS with 0.02% sodium azide, 50% glycerol, pH7.3.

Product Images



Western blot analysis of extracts of HeLa and 293 cells, using Phospho-IκBα-S32/36 antibody (CABP0614) at 1:1000 dilution. HeLa cells were treated by TNF-α (20ng/mL) for 30 minutes. 293 cells were treated by TNF-α (20ng/mL) for 30 minutes. Secondary antibody: HRP Goat Anti-Rabbit IgG (H+L) (CABS014) at 1:10000 dilution. Lysates/proteins: 25ug per lane. Blocking buffer: 3% BSA