

Phospho-PRKDC-S2056 Rabbit Polyclonal Antibody

CABP0621



Product Information

Size:

20uL, 50uL, 100uL, 200uL

Observed MW:

469kDa

Calculated MW:

465kDa/469kDa

Applications:

WB IF

Reactivity:

Human, Mouse, Rat

Antibody Information

Recommended dilutions:

WB 1:500 - 1:2000 IF 1:50 - 1:200

Source:

Rabbit

Isotype:

IgG

Purification:

Affinity purification

Protein Background

This gene encodes the catalytic subunit of the DNA-dependent protein kinase (DNA-PK). It functions with the Ku70/Ku80 heterodimer protein in DNA double strand break repair and recombination. The protein encoded is a member of the PI3/PI4-kinase family.

Immunogen information

Gene ID:

5591

Uniprot

P78527

Synonyms:

PRKDC; DNA-PKcs; DNAPK; DNPK1; HYRC; HYRC1; IMD26; XRCC7; p350

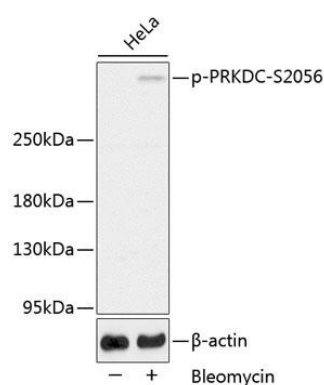
Immunogen:

A synthetic phosphorylated peptide around S2056 of human PRKDC (NP_008835.5).

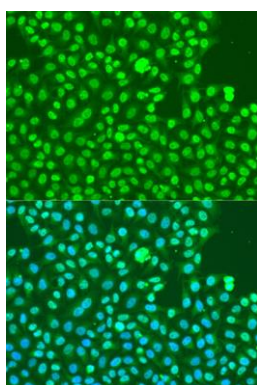
Storage:

Store at -20°C. Avoid freeze / thaw cycles. Buffer: PBS with 0.02% sodium azide, 50% glycerol, pH7.3.

Product Images



Western blot analysis of extracts of HeLa cells, using Phospho-PRKDC-S2056 antibody (CABP0621). Secondary antibody: HRP Goat Anti-Rabbit IgG (H+L) (CABS014) at 1:10000 dilution. Lysates/proteins: 25ug per lane. Blocking buffer: 3% BSA.



Immunofluorescence analysis of U2OS cells using Phospho-PRKDC-S2056 antibody (CABP0621) at dilution of 1:100. Blue: DAPI for nuclear staining.