

Phospho-ATR-S428 Rabbit Polyclonal Antibody



CABP0676

Product Information

Size:

20uL, 50uL, 100uL, 200uL

Observed MW:

300kDa

Calculated MW:

294kDa/297kDa/301kDa

Applications:

WB IF

Reactivity:

Human, Mouse

Antibody Information

Recommended dilutions:

WB 1:500 - 1:2000 IF 1:50 - 1:200

Source:

Rabbit

Isotype:

IgG

Purification:

Affinity purification

Protein Background

The protein encoded by this gene belongs to the PI3/PI4-kinase family, and is most closely related to ATM, a protein kinase encoded by the gene mutated in ataxia telangiectasia. This protein and ATM share similarity with *Schizosaccharomyces pombe rad3*, a cell cycle checkpoint gene required for cell cycle arrest and DNA damage repair in response to DNA damage. This kinase has been shown to phosphorylate checkpoint kinase CHK1, checkpoint proteins RAD17, and RAD9, as well as tumor suppressor protein BRCA1. Mutations of this gene are associated with Seckel syndrome. An alternatively spliced transcript variant of this gene has been reported, however, its full length nature is not known. Transcript variants utilizing alternative polyA sites exist.

Immunogen information

Gene ID:

545

Uniprot

Q13535

Synonyms:

ATR; FCTCS; FRP1; MEC1; SCKL; SCKL1

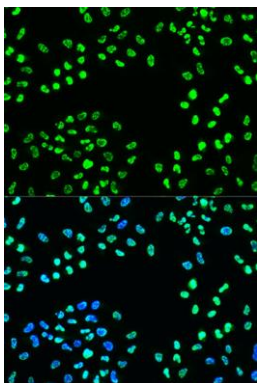
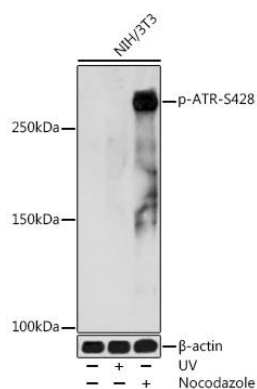
Immunogen:

A synthetic phosphorylated peptide around S428 of human ATR (NP_001175.2).

Storage:

Store at -20°C. Avoid freeze / thaw cycles. Buffer: PBS with 0.02% sodium azide, 50% glycerol, pH7.3.

Product Images



Western blot analysis of extracts of NIH/3T3 cells, using Phospho-ATR-S428 antibody (CABP0676) at 1:1000 dilution. NIH/3T3 cells were treated by UV at room temperature for 15-30 minutes. NIH/3T3 cells were treated by Nocodazole (50 ng/ml) at 37°C for 20 hours. Secondary antibody: HRP Goat Anti-Rabbit IgG (H+L) (CABS014) at 1:10000 dilution. Lysates/proteins: 25ug per lane. Blocking buffer: 3% nonfat dry milk in TBST. Detection: ECL Basic Kit (CABM00020). Exposure time: 30s.

Immunofluorescence analysis of U2OS cells using Phospho-ATR-S428 antibody (CABP0676) at dilution of 1:100. Blue: DAPI for nuclear staining.