

Phospho-eIF2Alpha-S51 Rabbit Monoclonal Antibody

CABP0692



Product Information

Size:

20uL, 50uL, 100uL

Observed MW:

36kDa

Calculated MW:

36kDa

Applications:

WB

Reactivity:

Human, Mouse, Rat

Protein Background

The translation initiation factor EIF2 catalyzes the first regulated step of protein synthesis initiation, promoting the binding of the initiator tRNA to 40S ribosomal subunits. Binding occurs as a ternary complex of methionyl-tRNA, EIF2, and GTP. EIF2 is composed of 3 nonidentical subunits, the 36-kD EIF2-alpha subunit (EIF2S1), the 38-kD EIF2-beta subunit (EIF2S2; MIM 603908), and the 52-kD EIF2-gamma subunit (EIF2S3; MIM 300161). The rate of formation of the ternary complex is modulated by the phosphorylation state of EIF2-alpha (Ernst et al., 1987 [PubMed 2948954]).[supplied by OMIM, Feb 2010]

Immunogen information

Gene ID:

1965

Uniprot

P05198

Synonyms:

EIF-2; EIF-2A; EIF-2alpha; EIF2; EIF2A; EIF2S1

Antibody Information

Recommended dilutions:

WB 1:500 - 1:2000

Source:

Rabbit

Isotype:

IgG

Purification:

Affinity purification

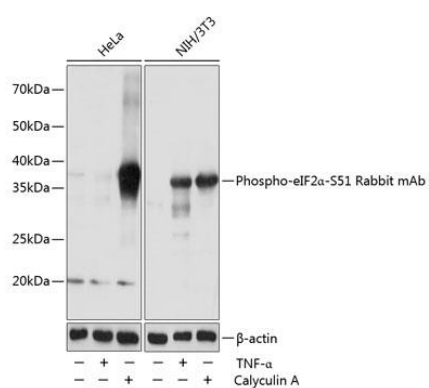
Immunogen:

A synthesized peptide derived from human Phospho-EIF2S1 (S51).

Storage:

Store at -20°C. Avoid freeze / thaw cycles. Buffer: PBS with 0.02% sodium azide, 0.05% BSA, 50% glycerol, pH7.3.

Product Images



Western blot - Phospho-eIF2α-S51 Rabbit mAb (CABP0692)