

# Phospho-IkBAAlpha-S32 Rabbit Monoclonal Antibody

## CABP0707



### Product Information

**Size:**

20uL, 50uL, 100uL

**Observed MW:**

39KDa

**Calculated MW:**

39kDa

**Applications:**

WB

**Reactivity:**

Human, Mouse, Rat

### Protein Background

This gene encodes a member of the NF-kappa-B inhibitor family, which contain multiple ankrin repeat domains. The encoded protein interacts with REL dimers to inhibit NF-kappa-B/REL complexes which are involved in inflammatory responses. The encoded protein moves between the cytoplasm and the nucleus via a nuclear localization signal and CRM1-mediated nuclear export. Mutations in this gene have been found in ectodermal dysplasia anhidrotic with T-cell immunodeficiency autosomal dominant disease. [provided by RefSeq, Aug 2011]

### Immunogen information

**Gene ID:**

4792

**Uniprot**

P25963

**Synonyms:**

IKBA; MAD-3; NFKBI; IKB alpha; NFKBIA; EDAID2

### Antibody Information

**Recommended dilutions:**

WB 1:500 - 1:2000

**Source:**

Rabbit

**Isotype:**

IgG

**Purification:**

Affinity purification

**Immunogen:**

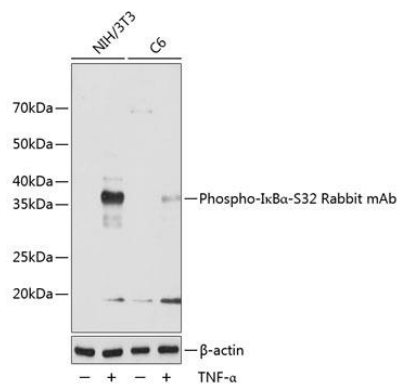
A synthesized peptide derived from human Phospho-IKB alpha (S32).

**Storage:**

Store at -20°C. Avoid freeze / thaw cycles. Buffer: PBS with 0.02% sodium azide, 0.05% BSA, 50% glycerol, pH7.3.

## Product Images

---



Western blot - Phospho-IkBa-S32 Rabbit mAb (CABP0707)