

# Phospho-IkBAAlpha-S32 Rabbit Polyclonal Antibody

## CABP0731



### Product Information

**Size:**

20uL, 50uL, 100uL, 200uL

**Observed MW:**

39kDa/41kDa

**Calculated MW:**

35kDa

**Applications:**

WB IHC IF

**Reactivity:**

Human, Mouse, Rat

### Protein Background

This gene encodes a member of the NF-kappa-B inhibitor family, which contain multiple ankrin repeat domains. The encoded protein interacts with REL dimers to inhibit NF-kappa-B/REL complexes which are involved in inflammatory responses. The encoded protein moves between the cytoplasm and the nucleus via a nuclear localization signal and CRM1-mediated nuclear export. Mutations in this gene have been found in ectodermal dysplasia anhidrotic with T-cell immunodeficiency autosomal dominant disease.

### Immunogen information

**Gene ID:**

4792

**Uniprot**

P25963

**Synonyms:**

IKBA; MAD-3; NFKBI; IKB alpha; NFKBIA; EDAID2

### Antibody Information

**Recommended dilutions:**

WB 1:500 - 1:2000 IHC 1:50  
- 1:200 IF 1:50 - 1:200

**Source:**

Rabbit

**Isotype:**

IgG

**Purification:**

Affinity purification

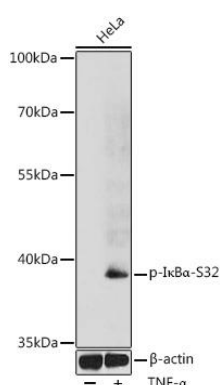
**Immunogen:**

A synthetic phosphorylated peptide around S32 of human IkBAAlpha (NP\_065390.1).

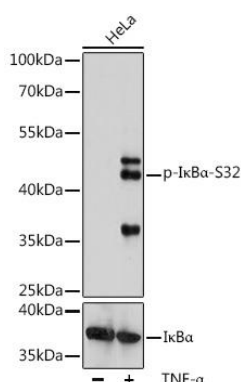
**Storage:**

Store at -20°C. Avoid freeze / thaw cycles. Buffer: PBS with 0.02% sodium azide, 50% glycerol, pH7.3.

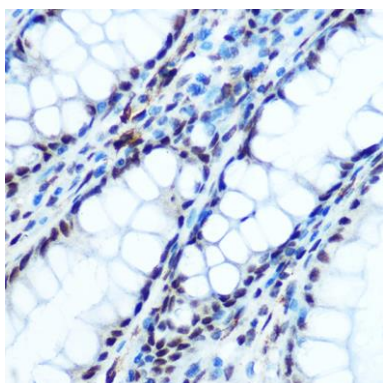
## Product Images



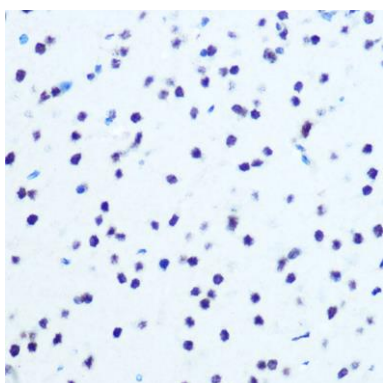
Western blot analysis of extracts of HeLa cells, using Phospho-IkBα-S32 antibody (CABP0731) at 1:1000 dilution. HeLa cells were treated by TNF-α (20 ng/mL) at 37°C for 30 minutes. Secondary antibody: HRP Goat Anti-Rabbit IgG (H+L) (CABS014) at 1:10000 dilution. Lysates/proteins: 25ug per lane. Blocking buffer: 3% BSA. Detection: ECL Basic Kit (CABM00020). Exposure time: 90s.



Western blot analysis of extracts of HeLa cells, using Phospho-IkBα-S32 pAb (CABP0731) at 1:1000 dilution or IκBα antibody (CAB11397). HeLa cells were treated by TNF-α (20 ng/mL) at 37°C for 30 minutes. Secondary antibody: HRP Goat Anti-Rabbit IgG (H+L) (CABS014) at 1:10000 dilution. Lysates/proteins: 25ug per lane. Blocking buffer: 3% BSA. Detection: ECL Basic Kit (CABM00020). Exposure time: 3min.



Immunohistochemistry of paraffin-embedded human colon using Phospho-IkBα-S32 Rabbit pAb (CABP0731) at dilution of 1:100 (40x lens).



Immunohistochemistry of paraffin-embedded mouse brain using Phospho-IkBα-S32 Rabbit pAb (CABP0731) at dilution of 1:100 (40x lens).