

Phospho-VASP-S157 Rabbit Polyclonal Antibody



CABP0763

Product Information

Size:

20uL, 50uL, 100uL, 200uL

Observed MW:

50kDa

Calculated MW:

39kDa

Applications:

WB IHC IP

Reactivity:

Human, Mouse, Rat

Protein Background

Vasodilator-stimulated phosphoprotein (VASP) is a member of the Ena-VASP protein family. Ena-VASP family members contain an EHV1 N-terminal domain that binds proteins containing E/DFPPPPXD/E motifs and targets Ena-VASP proteins to focal adhesions. In the mid-region of the protein, family members have a proline-rich domain that binds SH3 and WW domain-containing proteins. Their C-terminal EVH2 domain mediates tetramerization and binds both G and F actin. VASP is associated with filamentous actin formation and likely plays a widespread role in cell adhesion and motility. VASP may also be involved in the intracellular signaling pathways that regulate integrin-extracellular matrix interactions. VASP is regulated by the cyclic nucleotide-dependent kinases PKA and PKG.

Immunogen information

Gene ID:

7408

Uniprot

P50552

Antibody Information

Recommended dilutions:

WB 1:500 - 1:2000 IHC 1:50
- 1:100 IP 1:50 - 1:100

Source:

Rabbit

Isotype:

IgG

Purification:

Affinity purification

Synonyms:

VASP

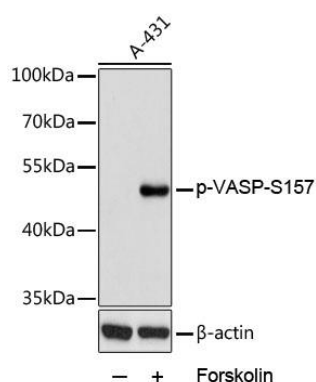
Immunogen:

A synthetic phosphorylated peptide around S157 of human VASP (NP_003361.1).

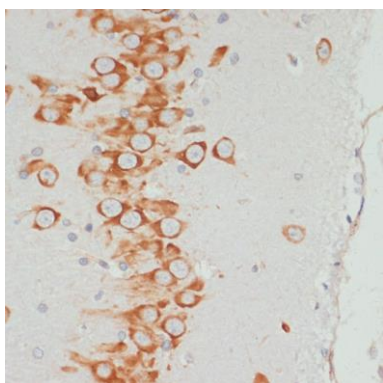
Storage:

Store at -20°C. Avoid freeze / thaw cycles. Buffer: PBS with 0.02% sodium azide, 50% glycerol, pH7.3.

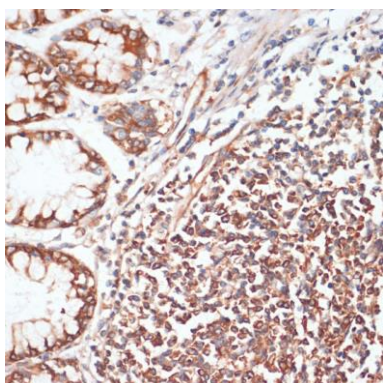
Product Images



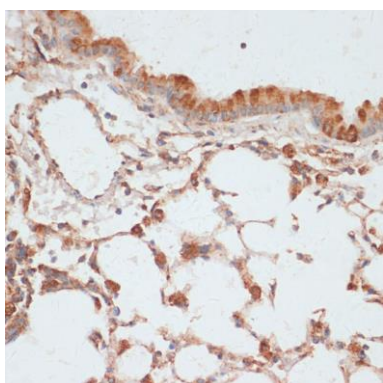
Western blot analysis of extracts of A431 cells, using Phospho-VASP-S157 antibody (CABP0763) at 1:2000 dilution. A431 cells were treated by Forskolin (10uM) for 30 minutes after serum-starvation overnight. Secondary antibody: HRP Goat Anti-Rabbit IgG (H+L) (CABS014) at 1:10000 dilution. Lysates/proteins: 25ug per lane. Blocking buffer: 3% BSA. Detection: ECL Basic Kit (CABM00020). Exposure time: 1s.



Immunohistochemistry of paraffin-embedded rat brain using Phospho-VASP-S157 antibody (CABP0763) at dilution of 1:100 (40x lens).



Immunohistochemistry of paraffin-embedded human colon using Phospho-VASP-S157 antibody (CABP0763) at dilution of 1:100 (40x lens).



Immunohistochemistry of paraffin-embedded mouse lung using Phospho-VASP-S157 antibody (CABP0763) at dilution of 1:100 (40x lens).