

Phospho-P90RSK-S363 Rabbit Polyclonal Antibody

CABP0767



Product Information

Size:

20uL, 50uL, 100uL, 200uL

Observed MW:

90kDa

Calculated MW:

72kDa/81kDa/82kDa/83kDa

Applications:

WB IP

Reactivity:

Human, Rat

Protein Background

This gene encodes a member of the RSK (ribosomal S6 kinase) family of serine/threonine kinases. This kinase contains 2 nonidentical kinase catalytic domains and phosphorylates various substrates, including members of the mitogen-activated kinase (MAPK) signalling pathway. The activity of this protein has been implicated in controlling cell growth and differentiation. Alternate transcriptional splice variants, encoding different isoforms, have been characterized.

Immunogen information

Gene ID:

6195

Uniprot

Q15418

Synonyms:

HU-1; MAPKAPK1A; RSK; RSK1; p90Rsk; RPS6KA1

Antibody Information

Recommended dilutions:

WB 1:500 - 1:2000 IP 1:50 - 1:100

Source:

Rabbit

Isotype:

IgG

Purification:

Affinity purification

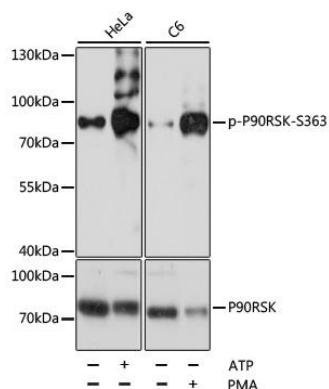
Immunogen:

A phospho specific peptide corresponding to residues surrounding S363 of human P90RSK

Storage:

Store at -20°C. Avoid freeze / thaw cycles. Buffer: PBS with 0.02% sodium azide, 50% glycerol, pH7.3.

Product Images



Western blot analysis of extracts of various cell lines, using Phospho-RPS6KA1-S363 antibody (CABP0767) at 1:2000 dilution or RPS6KA1 antibody (CAB15718). HeLa cells were treated by ATP(5 mM) at 30'C for 1 hour. C6 cells were treated by PMA/TPA (200 nM) at 37'C for 30 minutes after serum-starvation overnight. Secondary antibody: HRP Goat Anti-Rabbit IgG (H+L) (CABS014) at 1:10000 dilution. Lysates/proteins: 25ug per lane. Blocking buffer: 3% BSA. Detection: ECL Basic Kit (CABM00020). Exposure time: 90s.