

# Phospho-LMNA-S22 Rabbit Polyclonal Antibody



CABP0777

## Product Information

### Size:

20uL, 50uL, 100uL, 200uL

### Observed MW:

69kDa, 78kDa

### Calculated MW:

62-74kDa

### Applications:

WB IP

### Reactivity:

Human, Rat

## Antibody Information

### Recommended dilutions:

WB 1:500 - 1:2000 IP 1:50 - 1:100

### Source:

Rabbit

### Isotype:

IgG

### Purification:

Affinity purification

## Protein Background

The nuclear lamina consists of a two-dimensional matrix of proteins located next to the inner nuclear membrane. The lamin family of proteins make up the matrix and are highly conserved in evolution. During mitosis, the lamina matrix is reversibly disassembled as the lamin proteins are phosphorylated. Lamin proteins are thought to be involved in nuclear stability, chromatin structure and gene expression. Vertebrate lamins consist of two types, A and B. Alternative splicing results in multiple transcript variants. Mutations in this gene lead to several diseases: Emery-Dreifuss muscular dystrophy, familial partial lipodystrophy, limb girdle muscular dystrophy, dilated cardiomyopathy, Charcot-Marie-Tooth disease, and Hutchinson-Gilford progeria syndrome.

## Immunogen information

### Gene ID:

4000

### Uniprot

P02545

### Synonyms:

LMNA; CDCD1; CDDC; CMD1A; CMT2B1; EMD2; FPL; FPLD; FPLD2; HGPS; IDC; LDP1; LFP; LGMD1B; LMN1; LMNC; LMNL1; MADA; PRO1; lamin; Lamin A/C

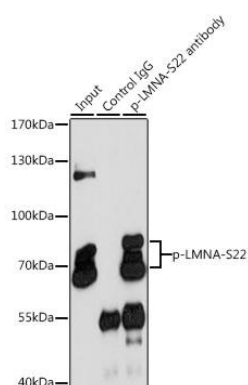
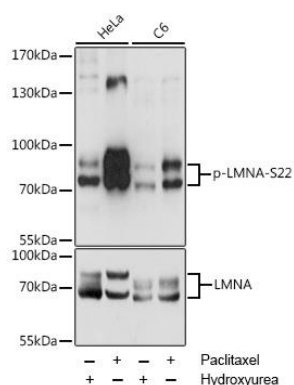
### Immunogen:

A synthetic phosphorylated peptide around S22 of human LMNA (NP\_005563.1).

### Storage:

Store at -20°C. Avoid freeze / thaw cycles. Buffer: PBS with 0.02% sodium azide, 50% glycerol, pH7.3.

## Product Images



Western blot analysis of extracts of various cell lines, using Phospho-LMNA-S22 antibody (CABP0777) at 1:2000 dilution or LMNA antibody (CAB0249). HeLa cells were treated by Hydroxyurea (4 mM) at 37°C for 20 hours or treated by Paclitaxel (100 nM/mL) at 37°C for 20 hours. C6 cells were treated by Hydroxyurea (4 mM) at 37°C for 20 hours or treated by Paclitaxel (100 nM) at 37°C for 20 hours. Secondary antibody: HRP Goat Anti-Rabbit IgG (H+L) (CABS014) at 1:10000 dilution. Lysates/proteins: 25ug per lane. Blocking buffer: 3% BSA. Detection: ECL Enhanced Kit (CABM00021). Exposure time: 1s.

Immunoprecipitation analysis of 200ug extracts of HeLa cells, using 3 ug Phospho-LMNA-S22 pAb (CABP0777). Western blot was performed from the immunoprecipitate using Phospho-LMNA-S22 pAb (CABP0777) at a dilution of 1:1000. HeLa cells were treated by Paclitaxel (100 nM/mL) at 37°C for 20 hours.