

# Phospho-ACLY-S455 Rabbit Polyclonal Antibody



CABP0779

## Product Information

### Size:

20uL, 50uL, 100uL, 200uL

### Observed MW:

121kDa

### Calculated MW:

91kDa/119kDa/120kDa

### Applications:

WB IHC IP

### Reactivity:

Human, Mouse, Rat

## Antibody Information

### Recommended dilutions:

WB 1:500 - 1:2000 IHC 1:50  
- 1:100 IP 1:50 - 1:100

### Source:

Rabbit

### Isotype:

IgG

### Purification:

Affinity purification

## Protein Background

ATP citrate lyase is the primary enzyme responsible for the synthesis of cytosolic acetyl-CoA in many tissues. The enzyme is a tetramer (relative molecular weight approximately 440, 000) of apparently identical subunits. It catalyzes the formation of acetyl-CoA and oxaloacetate from citrate and CoA with a concomitant hydrolysis of ATP to ADP and phosphate. The product, acetyl-CoA, serves several important biosynthetic pathways, including lipogenesis and cholesterologenesis. In nervous tissue, ATP citrate-lyase may be involved in the biosynthesis of acetylcholine. Multiple transcript variants encoding distinct isoforms have been identified for this gene.

## Immunogen information

### Gene ID:

47

### Uniprot

P53396

### Synonyms:

ACLY; ACL; ATPCL; CLATP

### Immunogen:

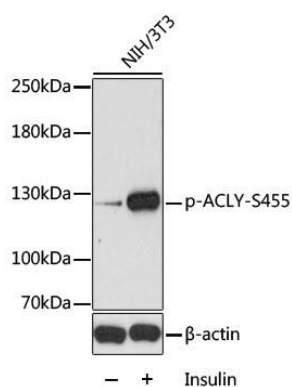
A synthetic phosphorylated peptide around S455 of human ACLY (NP\_001087.2).

### Storage:

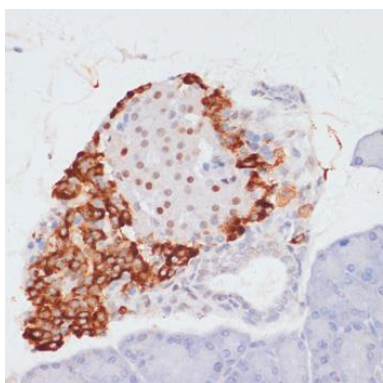
Store at -20°C. Avoid freeze / thaw cycles. Buffer: PBS with 0.02% sodium azide, 50% glycerol, pH7.3.

## Product Images

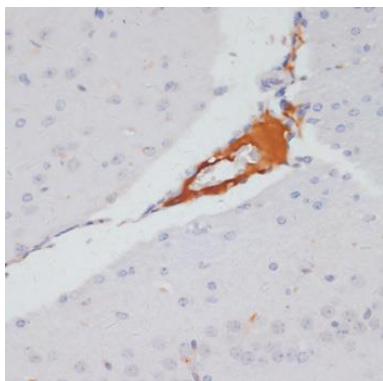
---



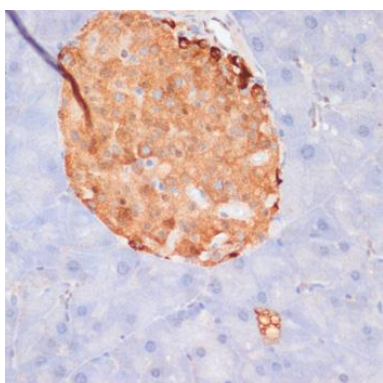
Western blot analysis of extracts of NIH/3T3 cells, using Phospho-ACLY-S455 antibody (CABP0779) at 1:2000 dilution. NIH/3T3 cells were treated by Insulin (100nM) for 10 minutes after serum-starvation overnight. Secondary antibody: HRP Goat Anti-Rabbit IgG (H+L) (CABS014) at 1:10000 dilution. Lysates/proteins: 25ug per lane. Blocking buffer: 3% BSA. Detection: ECL Basic Kit (CABM00020). Exposure time: 60s.



Immunohistochemistry of paraffin-embedded rat pancreas using Phospho-ACLY-S455 antibody (CABP0779) at dilution of 1:100 (40x lens).



Immunohistochemistry of paraffin-embedded mouse brain using Phospho-ACLY-S455 antibody (CABP0779) at dilution of 1:100 (40x lens).



Immunohistochemistry of paraffin-embedded mouse pancreas using Phospho-ACLY-S455 antibody (CABP0779) at dilution of 1:100 (40x lens).