

Phospho-FLNA-S2152 Rabbit Polyclonal Antibody



CABP0783

Product Information

Size:

20uL, 50uL, 100uL, 200uL

Observed MW:

300kDa

Calculated MW:

280kDa

Applications:

WB

Reactivity:

Human, Mouse, Rat

Antibody Information

Recommended dilutions:

WB 1:500 - 1:2000

Source:

Rabbit

Isotype:

IgG

Purification:

Affinity purification

Protein Background

The protein encoded by this gene is an actin-binding protein that crosslinks actin filaments and links actin filaments to membrane glycoproteins. The encoded protein is involved in remodeling the cytoskeleton to effect changes in cell shape and migration. This protein interacts with integrins, transmembrane receptor complexes, and second messengers. Defects in this gene are a cause of several syndromes, including periventricular nodular heterotopias (PVNH1, PVNH4), otopalatodigital syndromes (OPD1, OPD2), frontometaphyseal dysplasia (FMD), Melnick-Needles syndrome (MNS), and X-linked congenital idiopathic intestinal pseudoobstruction (CIIPX). Two transcript variants encoding different isoforms have been found for this gene.

Immunogen information

Gene ID:

2316

Uniprot

P21333

Synonyms:

FLNA; ABP-280; ABPX; CSBS; CVD1; FLN; FLN-A; FLN1; FMD; MNS; NHBP; OPD; OPD1; OPD2; XLVD; XMVD; filamin-A

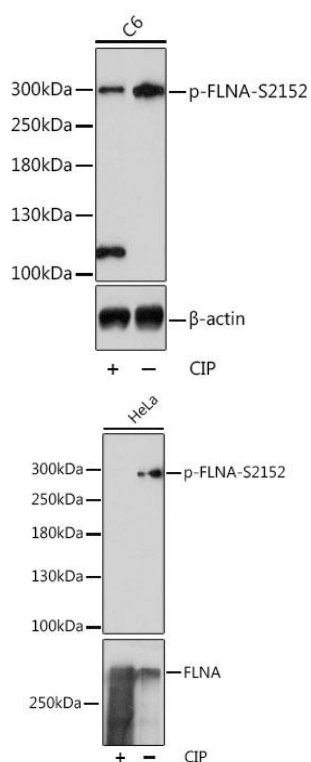
Immunogen:

A synthetic phosphorylated peptide around S2152 of human FLNA (NP_001104026.1).

Storage:

Store at -20°C. Avoid freeze / thaw cycles. Buffer: PBS with 0.02% sodium azide, 50% glycerol, pH7.3.

Product Images



Western blot analysis of extracts of C6 cells, using Phospho-FLNA-S2152 antibody (CABP0783) at 1:1000 dilution. C6 cell lysate were treated by CIP (20ul CIP for each 400ul cell lysate) at 37°C for 1 hour. Secondary antibody: HRP Goat Anti-Rabbit IgG (H+L) (CABS014) at 1:10000 dilution. Lysates/proteins: 25ug per lane. Blocking buffer: 3% BSA. Detection: ECL Enhanced Kit (CABM00021). Exposure time: 30s.

Western blot analysis of extracts of HeLa cells, using Phospho-FLNA-S2152 pAb (CABP0783) at 1:1000 dilution or FLNA antibody (CAB7896). HeLa cell lysate were treated by CIP (20ul CIP for each 400ul cell lysate) at 37°C for 1 hour. Secondary antibody: HRP Goat Anti-Rabbit IgG (H+L) (CABS014) at 1:10000 dilution. Lysates/proteins: 25ug per lane. Blocking buffer: 3% BSA. Detection: ECL Enhanced Kit (CABM00021). Exposure time: 30s.