

Phospho-PLCG2-Y759 Rabbit Polyclonal Antibody



CABP0785

Product Information

Size:

20uL, 50uL, 100uL, 200uL

Observed MW:

150kDa

Calculated MW:

147kDa

Applications:

WB

Reactivity:

Human

Protein Background

The protein encoded by this gene is a transmembrane signaling enzyme that catalyzes the conversion of 1-phosphatidyl-1D-myo-inositol 4, 5-bisphosphate to 1D-myo-inositol 1, 4, 5-trisphosphate (IP3) and diacylglycerol (DAG) using calcium as a cofactor. IP3 and DAG are second messenger molecules important for transmitting signals from growth factor receptors and immune system receptors across the cell membrane. Mutations in this gene have been found in autoinflammation, antibody deficiency, and immune dysregulation syndrome and familial cold autoinflammatory syndrome 3.

Immunogen information

Gene ID:

5336

Uniprot

P16885

Synonyms:

PLCG2; APLAID; FCAS3; PLC-IV; PLC-gamma-2

Antibody Information

Recommended dilutions:

WB 1:500 - 1:2000

Source:

Rabbit

Isotype:

IgG

Purification:

Affinity purification

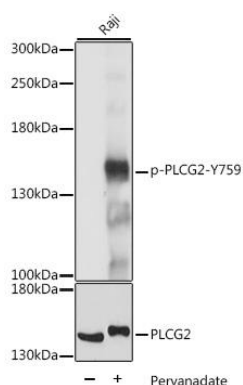
Immunogen:

A synthetic phosphorylated peptide around Y759 of human PLCG2 (NP_002652.2).

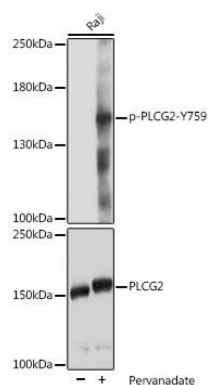
Storage:

Store at -20°C. Avoid freeze / thaw cycles. Buffer: PBS with 0.02% sodium azide, 50% glycerol, pH7.3.

Product Images



Western blot analysis of extracts of Raji cells, using Phospho-PLCG2-Y759 antibody (CABP0785) at 1:2000 dilution or PLCG2 antibody (CAB2182). Raji cells were treated by Pervanadate (1 mM) at 37°C for 30 minutes. Secondary antibody: HRP Goat Anti-Rabbit IgG (H+L) (CABS014) at 1:10000 dilution. Lysates/proteins: 25ug per lane. Blocking buffer: 3% BSA. Detection: ECL Basic Kit (CABM00020). Exposure time: 1s.



Western blot analysis of extracts of Raji cells, using Phospho-PLCG2-Y759 pAb (CABP0785) at 1:2000 dilution or PLCG2 antibody (CAB2182).Raji cells were treated by Pervanadate (1 mM) at 37°C for 30 minutes. Secondary antibody: HRP Goat Anti-Rabbit IgG (H+L) (CABS014) at 1:10000 dilution. Lysates/proteins: 25ug per lane. Blocking buffer: 3% BSA. Detection: ECL Basic Kit (CABM00020). Exposure time: 1s.