

# Phospho-PPP1CA-T320 Rabbit Polyclonal Antibody

## CABP0786



### Product Information

**Size:**

20uL, 50uL, 100uL, 200uL

**Observed MW:**

38kDa

**Calculated MW:**

32kDa/37kDa/38kDa

**Applications:**

WB IHC

**Reactivity:**

Human, Mouse, Rat

### Antibody Information

**Recommended dilutions:**

WB 1:500 - 1:2000 IHC 1:50 - 1:100

**Source:**

Rabbit

**Isotype:**

IgG

**Purification:**

Affinity purification

### Protein Background

The protein encoded by this gene is one of the three catalytic subunits of protein phosphatase 1 (PP1). PP1 is a serine/threonine specific protein phosphatase known to be involved in the regulation of a variety of cellular processes, such as cell division, glycogen metabolism, muscle contractility, protein synthesis, and HIV-1 viral transcription. Increased PP1 activity has been observed in the end stage of heart failure. Studies in both human and mice suggest that PP1 is an important regulator of cardiac function. Mouse studies also suggest that PP1 functions as a suppressor of learning and memory. Three alternatively spliced transcript variants encoding different isoforms have been found for this gene.

### Immunogen information

**Gene ID:**

5499

**Uniprot**

P62136

**Synonyms:**

PPP1CA; PP-1A; PP1A; PP1alpha; PPP1A

**Immunogen:**

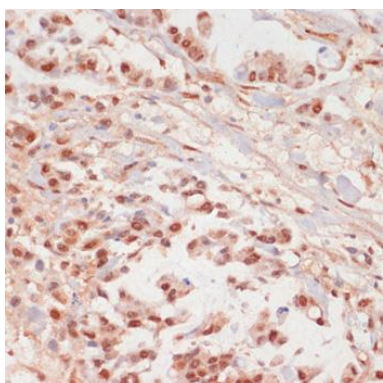
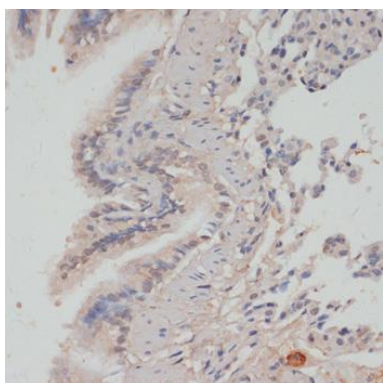
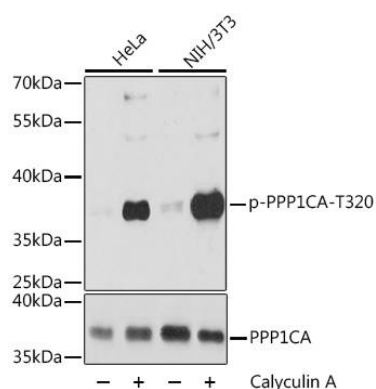
A phospho specific peptide corresponding to residues surrounding T320 of human PPP1CA

**Storage:**

Store at -20°C. Avoid freeze / thaw cycles. Buffer: PBS with 0.02% sodium azide, 50% glycerol, pH7.3.

## Product Images

---



Western blot analysis of extracts of various cell lines, using Phospho-PPP1CA-T320 antibody (CABP0786) at 1:2000 dilution or PPP1CA antibody (CAB12468). NIH/3T3 cells were treated by Calyculin A (100 nM) at 37°C for 30 minutes after serum-starvation overnight. Secondary antibody: HRP Goat Anti-Rabbit IgG (H+L) (CABS014) at 1:10000 dilution. Lysates/proteins: 25ug per lane. Blocking buffer: 3% BSA. Detection: ECL Basic Kit (CABM00020). Exposure time: 30s.

Immunohistochemistry of paraffin-embedded rat lung using Phospho-PPP1CA-T320 antibody (CABP0786) at dilution of 1:100 (40x lens).

Immunohistochemistry of paraffin-embedded human gastric cancer using Phospho-PPP1CA-T320 antibody (CABP0786) at dilution of 1:100 (40x lens).