

# Phospho-PEA15-S104 Rabbit Polyclonal Antibody



CABP0788

---

## Product Information

### Size:

20uL, 50uL, 100uL, 200uL

### Observed MW:

13kDa/15kDa

### Calculated MW:

15kDa/17kDa

### Applications:

WB

### Reactivity:

Human, Mouse, Rat

## Antibody Information

### Recommended dilutions:

WB 1:500 - 1:2000

### Source:

Rabbit

### Isotype:

IgG

### Purification:

Affinity purification

## Protein Background

This gene encodes a death effector domain-containing protein that functions as a negative regulator of apoptosis. The encoded protein is an endogenous substrate for protein kinase C. This protein is also overexpressed in type 2 diabetes mellitus, where it may contribute to insulin resistance in glucose uptake. Alternative splicing results in multiple transcript variants.

## Immunogen information

### Gene ID:

8682

### Uniprot

Q15121

### Synonyms:

PEA15; HMAT1; HUMMAT1H; MAT1; MAT1H; PEA-15; PED

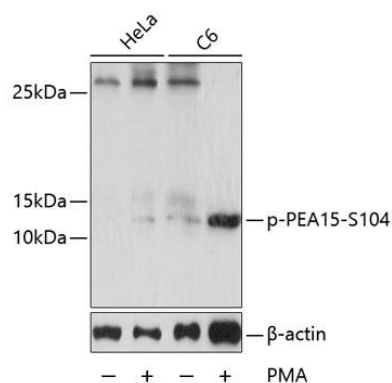
### Immunogen:

A synthetic phosphorylated peptide around S104 of human PEA15 (NP\_003759.1).

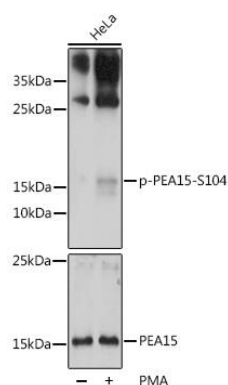
### Storage:

Store at -20°C. Avoid freeze / thaw cycles. Buffer: PBS with 0.02% sodium azide, 50% glycerol, pH7.3.

## Product Images



Western blot analysis of extracts of HeLa and C6 cells, using Phospho-PEA15-S104 antibody (CABP0788) at 1:2000 dilution. HeLa cells were treated by PMA/TPA (200nM) for 15 minutes after serum-starvation overnight. C6 cells were treated by PMA/TPA (200nM) for 30 minutes after serum-starvation overnight. Secondary antibody: HRP Goat Anti-Rabbit IgG (H+L) (CABS014) at 1:10000 dilution. Lysates/proteins: 25ug per lane. Blocking buffer: 3% BSA. Detection: ECL Basic Kit (CABM00020). Exposure time: 10s.



Western blot analysis of extracts of HeLa cells, using Phospho-PEA15-S104 pAb (CABP0788) at 1:2000 dilution or PEA15 antibody (CAB9956). HeLa cells were treated by PMA/TPA (200nM) for 15 minutes after serum-starvation overnight. Secondary antibody: HRP Goat Anti-Rabbit IgG (H+L) (CABS014) at 1:10000 dilution. Lysates/proteins: 25ug per lane. Blocking buffer: 3% BSA. Detection: ECL Basic Kit (CABM00020). Exposure time: 90s.