

# Phospho-BCAR1-Y410 Rabbit Polyclonal Antibody

## CABP0789



### Product Information

**Size:**

20uL, 50uL, 100uL, 200uL

**Observed MW:**

140kDa

**Calculated MW:**

77kDa/93kDa/95kDa/97kDa

**Applications:**

WB

**Reactivity:**

Human, Mouse

### Antibody Information

**Recommended dilutions:**

WB 1:500 - 1:2000

**Source:**

Rabbit

**Isotype:**

IgG

**Purification:**

Affinity purification

### Protein Background

BCAR1, or CAS, is an Src (MIM 190090) family kinase substrate involved in various cellular events, including migration, survival, transformation, and invasion (Sawada et al., 2006 [PubMed 17129785]).[supplied by OMIM, May 2009]

### Immunogen information

**Gene ID:**

9564

**Uniprot**

P56945

**Synonyms:**

BCAR1; CAS; CAS1; CASS1; CRKAS; P130Cas

**Immunogen:**

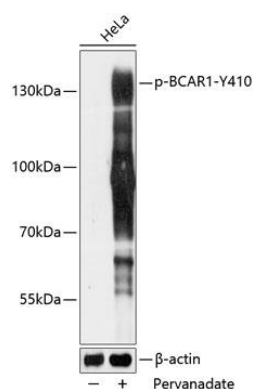
A phospho specific peptide corresponding to residues surrounding Y410 of human BCAR1

**Storage:**

Store at -20°C. Avoid freeze / thaw cycles. Buffer: PBS with 0.02% sodium azide, 50% glycerol, pH7.3.

## Product Images

---



Western blot analysis of extracts of HeLa cells, using Phospho-BCAR1-Y410 antibody (CABP0789) at 1:5000 dilution. HeLa cells were treated by Pervanadate (1nM) for 30 minutes after serum-starvation overnight. Secondary antibody: HRP Goat Anti-Rabbit IgG (H+L) (CABS014) at 1:10000 dilution. Lysates/proteins: 25ug per lane. Blocking buffer: 3% BSA. Detection: ECL Basic Kit (CABM00020). Exposure time: 5s.