

# Phospho-AKT1S1-T246 Rabbit Polyclonal Antibody

## CABP0793



### Product Information

**Size:**

20uL, 50uL, 100uL, 200uL

**Observed MW:**

45kDa

**Calculated MW:**

13kDa/27kDa/29kDa

**Applications:**

WB

**Reactivity:**

Human, Mouse

### Protein Background

AKT1S1 is a proline-rich substrate of AKT (MIM 164730) that binds 14-3-3 protein (see YWHAH, MIM 113508) when phosphorylated (Kovacina et al., 2003 [PubMed 12524439]).[supplied by OMIM, Mar 2008]

### Immunogen information

**Gene ID:**

84335

**Uniprot**

Q96B36

**Synonyms:**

AKT1S1; Lobe; PRAS40

### Antibody Information

**Recommended dilutions:**

WB 1:500 - 1:2000

**Source:**

Rabbit

**Isotype:**

IgG

**Purification:**

Affinity purification

**Immunogen:**

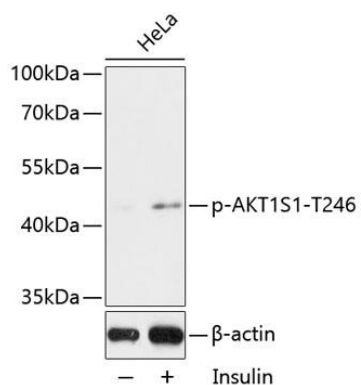
A synthetic phosphorylated peptide around T246 of human AKT1S1 (NP\_001092102.1).

**Storage:**

Store at -20°C. Avoid freeze / thaw cycles. Buffer: PBS with 0.02% sodium azide, 50% glycerol, pH7.3.

## Product Images

---



Western blot analysis of extracts of HeLa cells, using Phospho-AKT1S1-T246 antibody (CABP0793) at 1:2000 dilution. HeLa cells were treated by Insulin (0.01U/mL) for 15 minutes after serum-starvation overnight. Secondary antibody: HRP Goat Anti-Rabbit IgG (H+L) (CABS014) at 1:10000 dilution. Lysates/proteins: 25ug per lane. Blocking buffer: 3% BSA. Detection: ECL Basic Kit (CABM00020). Exposure time: 90s.