

# Phospho-EIF4G1-S1108 Rabbit Polyclonal Antibody

CABP0796



## Product Information

### Size:

20uL, 50uL, 100uL, 200uL

### Observed MW:

250kDa

### Calculated MW:

154kDa/158kDa/166kDa/171kDa/175kDa/176kDa

### Applications:

WB

### Reactivity:

Human, Mouse, Rat

## Antibody Information

### Recommended dilutions:

WB 1:500 - 1:2000

### Source:

Rabbit

### Isotype:

IgG

### Purification:

Affinity purification

## Protein Background

The protein encoded by this gene is a component of the multi-subunit protein complex EIF4F. This complex facilitates the recruitment of mRNA to the ribosome, which is a rate-limiting step during the initiation phase of protein synthesis. The recognition of the mRNA cap and the ATP-dependent unwinding of 5'-terminal secondary structure is catalyzed by factors in this complex. The subunit encoded by this gene is a large scaffolding protein that contains binding sites for other members of the EIF4F complex. A domain at its N-terminus can also interact with the poly(A)-binding protein, which may mediate the circularization of mRNA during translation. Alternative splicing results in multiple transcript variants, some of which are derived from alternative promoter usage.

## Immunogen information

### Gene ID:

1981

### Uniprot

Q04637

### Synonyms:

EIF4G1; EIF-4G1; EIF4F; EIF4G; EIF4GI; P220; PARK18

### Immunogen:

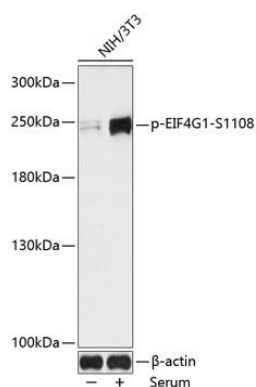
A synthetic phosphorylated peptide around S1108 of human EIF4G1 (NP\_001181875.1).

### Storage:

Store at -20°C. Avoid freeze / thaw cycles. Buffer: PBS with 0.02% sodium azide, 50% glycerol, pH7.3.

## Product Images

---



Western blot analysis of extracts of NIH/3T3 cells, using Phospho-EIF4G1-S1108 antibody (CABP0796) at 1:1000 dilution. NIH/3T3 cells were treated by 10% FBS for 30 minutes after serum-starvation overnight. Secondary antibody: HRP Goat Anti-Rabbit IgG (H+L) (CABS014) at 1:10000 dilution. Lysates/proteins: 25ug per lane. Blocking buffer: 3% BSA. Detection: ECL Enhanced Kit (CABM00021). Exposure time: 60s.