

Phospho-RPS6KA5-S376 Rabbit Polyclonal Antibody

CABP0800



Product Information

Size:

20uL, 50uL, 100uL, 200uL

Observed MW:

90kDa

Calculated MW:

61kDa/81kDa/89kDa

Applications:

WB IHC

Reactivity:

Human, Mouse, Rat

Protein Background

RPS6KA5 (Ribosomal Protein S6 Kinase A5) is a Protein Coding gene. Diseases associated with RPS6KA5 include Septic Myocarditis and Coffin-Lowry Syndrome. Among its related pathways are Adenylate cyclase inhibitory pathway and Nuclear Events (kinase and transcription factor activation). Gene Ontology (GO) annotations related to this gene include transferase activity, transferring phosphorus-containing groups and protein tyrosine kinase activity. An important paralog of this gene is RPS6KA4.

Immunogen information

Gene ID:

9252

Uniprot

O75582

Synonyms:

RPS6KA5; MSK1; MSPK1; RLPK

Antibody Information

Recommended dilutions:

WB 1:500 - 1:2000 IHC 1:50 - 1:100

Source:

Rabbit

Isotype:

IgG

Purification:

Affinity purification

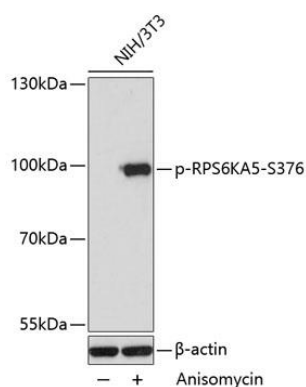
Immunogen:

A synthetic phosphorylated peptide around S376 of human RPS6KA5 (NP_004746.2).

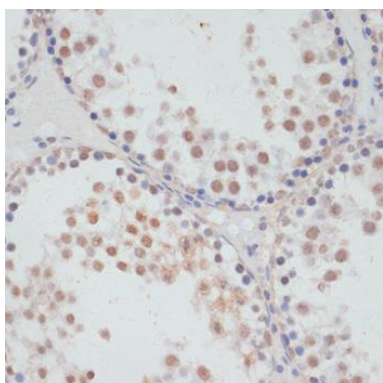
Storage:

Store at -20°C. Avoid freeze / thaw cycles. Buffer: PBS with 0.02% sodium azide, 50% glycerol, pH7.3.

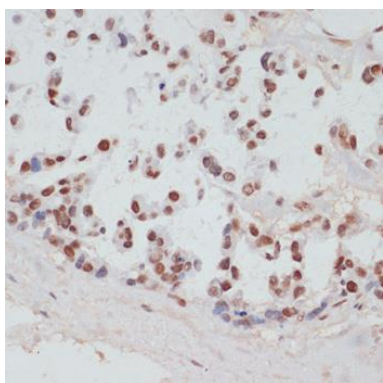
Product Images



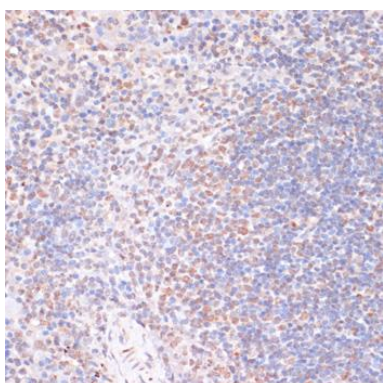
Western blot analysis of extracts of NIH/3T3 cells, using Phospho-RPS6KA5-S376 antibody (CABP0800) at 1:2000 dilution. NIH/3T3 cells were treated by Anisomycin (25ug/mL) for 30 minutes. Secondary antibody: HRP Goat Anti-Rabbit IgG (H+L) (CABS014) at 1:10000 dilution. Lysates/proteins: 25ug per lane. Blocking buffer: 3% BSA. Detection: ECL Basic Kit (CABM00020). Exposure time: 30s.



Immunohistochemistry of paraffin-embedded rat testis using Phospho-RPS6KA5-S376 antibody (CABP0800) at dilution of 1:100 (40x lens).



Immunohistochemistry of paraffin-embedded human gastric cancer using Phospho-RPS6KA5-S376 antibody (CABP0800) at dilution of 1:100 (40x lens).



Immunohistochemistry of paraffin-embedded mouse spleen using Phospho-RPS6KA5-S376 antibody (CABP0800) at dilution of 1:100 (40x lens).