

Phospho-CBX3-S83 Rabbit Polyclonal Antibody



CABP0801

Product Information

Size:

20uL, 50uL, 100uL, 200uL

Observed MW:

20kDa

Calculated MW:

20kDa

Applications:

WB

Reactivity:

Human

Antibody Information

Recommended dilutions:

WB 1:500 - 1:2000

Source:

Rabbit

Isotype:

IgG

Purification:

Affinity purification

Protein Background

At the nuclear envelope, the nuclear lamina and heterochromatin are adjacent to the inner nuclear membrane. The protein encoded by this gene binds DNA and is a component of heterochromatin. This protein also can bind lamin B receptor, an integral membrane protein found in the inner nuclear membrane. The dual binding functions of the encoded protein may explain the association of heterochromatin with the inner nuclear membrane. This protein binds histone H3 tails methylated at Lys-9 sites. This protein is also recruited to sites of ultraviolet-induced DNA damage and double-strand breaks. Two transcript variants encoding the same protein but differing in the 5' UTR, have been found for this gene.

Immunogen information

Gene ID:

11335

Uniprot

Q13185

Synonyms:

CBX3; HECH; HP1-GAMMA; HP1Hs-gamma

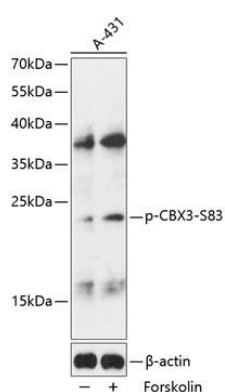
Immunogen:

A phospho specific peptide corresponding to residues surrounding S83 of human CBX3

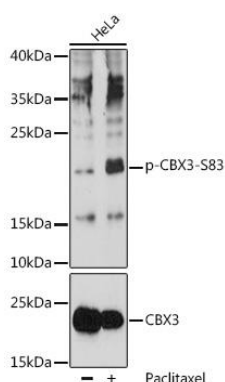
Storage:

Store at -20°C. Avoid freeze / thaw cycles. Buffer: PBS with 0.02% sodium azide, 50% glycerol, pH7.3.

Product Images



Western blot analysis of extracts of A431 cells, using Phospho-CBX3-S83 antibody (CABP0801) at 1:2000 dilution. A431 cells were treated by Forskolin (10uM) for 30 minutes after serum-starvation overnight. Secondary antibody: HRP Goat Anti-Rabbit IgG (H+L) (CABS014) at 1:10000 dilution. Lysates/proteins: 25ug per lane. Blocking buffer: 3% BSA. Detection: ECL Basic Kit (CABM00020). Exposure time: 90s.



Western blot analysis of extracts of HeLa cells, using Phospho-CBX3-S83 pAb (CABP0801) at 1:1000 dilution or CBX3 antibody (CAB2248). HeLa cells were treated by Paclitaxel (100 nM/mL) at 37°C for 20 hours. Secondary antibody: HRP Goat Anti-Rabbit IgG (H+L) (CABS014) at 1:10000 dilution. Lysates/proteins: 25ug per lane. Blocking buffer: 3% BSA. Detection: ECL Basic Kit (CABM00020). Exposure time: 60s.