

Phospho-PLCG2-Y1217 Rabbit Polyclonal Antibody

CABP0805



Product Information

Size:

20uL, 50uL, 100uL, 200uL

Observed MW:

150kDa

Calculated MW:

147kDa

Applications:

WB IHC

Reactivity:

Human, Mouse

Antibody Information

Recommended dilutions:

WB 1:500 - 1:2000 IHC 1:50 - 1:200

Source:

Rabbit

Isotype:

IgG

Purification:

Affinity purification

Protein Background

The protein encoded by this gene is a transmembrane signaling enzyme that catalyzes the conversion of 1-phosphatidyl-1D-myo-inositol 4, 5-bisphosphate to 1D-myo-inositol 1, 4, 5-trisphosphate (IP3) and diacylglycerol (DAG) using calcium as a cofactor. IP3 and DAG are second messenger molecules important for transmitting signals from growth factor receptors and immune system receptors across the cell membrane. Mutations in this gene have been found in autoinflammation, antibody deficiency, and immune dysregulation syndrome and familial cold autoinflammatory syndrome 3.

Immunogen information

Gene ID:

5336

Uniprot

P16885

Synonyms:

PLCG2; APLAID; FCAS3; PLC-IV; PLC-gamma-2

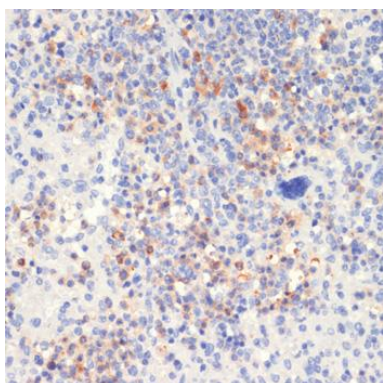
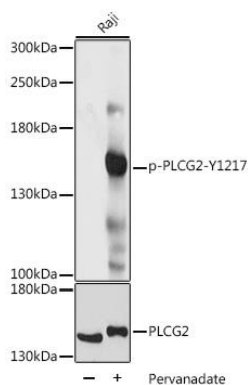
Immunogen:

A synthetic phosphorylated peptide around Y1217 of human PLCG2 (NP_002652.2).

Storage:

Store at -20°C. Avoid freeze / thaw cycles. Buffer: PBS with 0.02% sodium azide, 50% glycerol, pH7.3.

Product Images



Western blot analysis of extracts of Raji cells, using Phospho-PLCG2-Y1217 antibody (CABP0805) at 1:1000 dilution or PLCG2 antibody (CAB2182). Raji cells were treated by Pervanadate (1 mM) at 37°C for 30 minutes. Secondary antibody: HRP Goat Anti-Rabbit IgG (H+L) (CABS014) at 1:10000 dilution. Lysates/proteins: 25ug per lane. Blocking buffer: 3% BSA. Detection: ECL Basic Kit (CABM00020). Exposure time: 1s.

Immunohistochemistry of paraffin-embedded mouse spleen using Phospho-PLCG2-Y1217 antibody (CABP0805) at dilution of 1:100 (40x lens).