

Phospho-AP2M1-T156 Rabbit Polyclonal Antibody

CABP0823



Product Information

Size:

20uL, 50uL, 100uL, 200uL

Observed MW:

50kDa

Calculated MW:

49kDa

Applications:

WB

Reactivity:

Human, Mouse

Protein Background

This gene encodes a subunit of the heterotetrameric coat assembly protein complex 2 (AP2), which belongs to the adaptor complexes medium subunits family. The encoded protein is required for the activity of a vacuolar ATPase, which is responsible for proton pumping occurring in the acidification of endosomes and lysosomes. The encoded protein may also play an important role in regulating the intracellular trafficking and function of CTLA-4 protein. Three transcript variants encoding different isoforms have been found for this gene.

Immunogen information

Gene ID:

1173

Uniprot

Q96CW1

Synonyms:

AP2M1; AP50; CLAPM1; mu2

Antibody Information

Recommended dilutions:

WB 1:500 - 1:2000

Source:

Rabbit

Isotype:

IgG

Purification:

Affinity purification

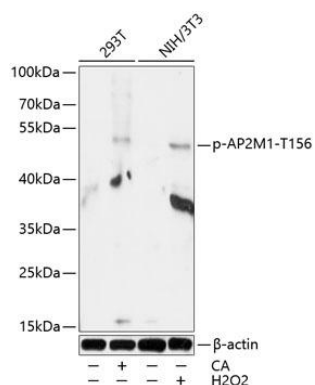
Immunogen:

A synthetic phosphorylated peptide around T156 of human AP2M1 (NP_001020376.1).

Storage:

Store at -20°C. Avoid freeze / thaw cycles. Buffer: PBS with 0.02% sodium azide, 50% glycerol, pH7.3.

Product Images



Western blot analysis of extracts of 293T and NIH/3T3 cells, using Phospho-AP2M1-T156 antibody (CABP0823) at 1:1000 dilution. 293T cells were treated by Calyculin A for 30 minutes after serum-starvation overnight. NIH/3T3 cells were treated by Hydrogen Peroxide (2nM) for 15 minutes after serum-starvation overnight. Secondary antibody: HRP Goat Anti-Rabbit IgG (H+L) (CABS014) at 1:10000 dilution. Lysates/proteins: 25ug per lane. Blocking buffer: 3% BSA. Detection: ECL Basic Kit (CABM00020). Exposure time: 30s.