

Phospho-SRF-S103 Rabbit Polyclonal Antibody



CABP0829

Product Information

Size:

20uL, 50uL, 100uL, 200uL

Observed MW:

70kDa

Calculated MW:

51kDa

Applications:

WB IHC

Reactivity:

Human, Mouse, Rat

Antibody Information

Recommended dilutions:

WB 1:500 - 1:2000 IHC 1:50
- 1:100

Source:

Rabbit

Isotype:

IgG

Purification:

Affinity purification

Protein Background

This gene encodes a ubiquitous nuclear protein that stimulates both cell proliferation and differentiation. It is a member of the MADS (MCM1, Agamous, Deficiens, and SRF) box superfamily of transcription factors. This protein binds to the serum response element (SRE) in the promoter region of target genes. This protein regulates the activity of many immediate-early genes, for example c-fos, and thereby participates in cell cycle regulation, apoptosis, cell growth, and cell differentiation. This gene is the downstream target of many pathways; for example, the mitogen-activated protein kinase pathway (MAPK) that acts through the ternary complex factors (TCFs). Two transcript variants encoding different isoforms have been found for this gene.

Immunogen information

Gene ID:

6722

Uniprot

P11831

Synonyms:

SRF; MCM1

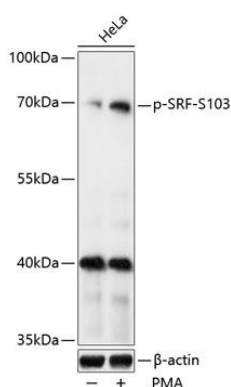
Immunogen:

A synthetic phosphorylated peptide around S103 of human SRF (NP_003122.1).

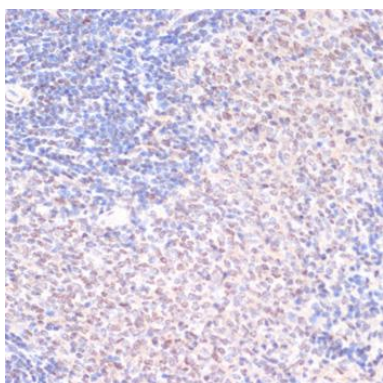
Storage:

Store at -20°C. Avoid freeze / thaw cycles. Buffer: PBS with 0.02% sodium azide, 50% glycerol, pH7.3.

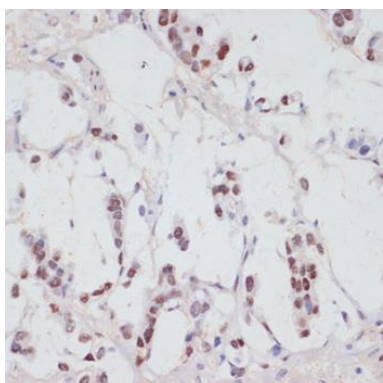
Product Images



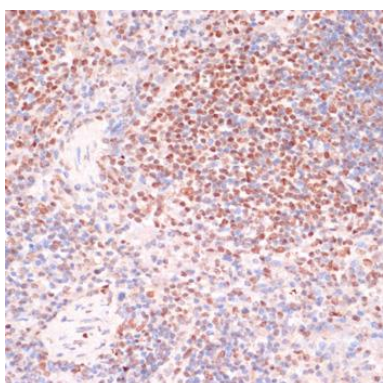
Western blot analysis of extracts of HeLa cells, using Phospho-SRF-S103 antibody (CABP0829) at 1:1000 dilution. HeLa cells were treated by PMA/TPA (200nM) for 15 minutes after serum-starvation overnight. Secondary antibody: HRP Goat Anti-Rabbit IgG (H+L) (CABS014) at 1:10000 dilution. Lysates/proteins: 25ug per lane. Blocking buffer: 3% BSA. Detection: ECL Basic Kit (CABM00020). Exposure time: 5s.



Immunohistochemistry of paraffin-embedded rat spleen using Phospho-SRF-S103 antibody (CABP0829) at dilution of 1:100 (40x lens).



Immunohistochemistry of paraffin-embedded human gastric cancer using Phospho-SRF-S103 antibody (CABP0829) at dilution of 1:100 (40x lens).



Immunohistochemistry of paraffin-embedded mouse spleen using Phospho-SRF-S103 antibody (CABP0829) at dilution of 1:100 (40x lens).