

Phospho-Chk1-S296 Rabbit Polyclonal Antibody



CABP0831

Product Information

Size:

20uL, 50uL, 100uL, 200uL

Observed MW:

Calculated MW:

43kDa/50kDa/54kDa

Applications:

WB IF

Reactivity:

Human, Mouse

Protein Background

The protein encoded by this gene belongs to the Ser/Thr protein kinase family. It is required for checkpoint mediated cell cycle arrest in response to DNA damage or the presence of unreplicated DNA. This protein acts to integrate signals from ATM and ATR, two cell cycle proteins involved in DNA damage responses, that also associate with chromatin in meiotic prophase I. Phosphorylation of CDC25A protein phosphatase by this protein is required for cells to delay cell cycle progression in response to double-strand DNA breaks. Several alternatively spliced transcript variants have been found for this gene.

Immunogen information

Gene ID:

1111

Uniprot

O14757

Synonyms:

CHEK1; CHK1

Antibody Information

Recommended dilutions:

WB 1:500 - 1:2000 IF 1:50 - 1:200

Source:

Rabbit

Isotype:

IgG

Purification:

Affinity purification

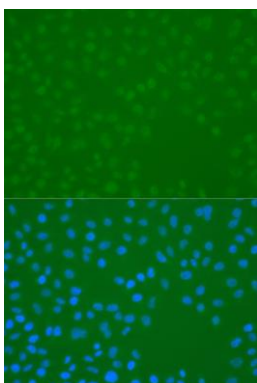
Immunogen:

A synthetic phosphorylated peptide around S296 of human Chk1 (NP_001265.2).

Storage:

Store at -20°C. Avoid freeze / thaw cycles. Buffer: PBS with 0.02% sodium azide, 50% glycerol, pH7.3.

Product Images



Immunofluorescence analysis of U2OS cells using Phospho-Chk1-S296 antibody (CABP0831) at dilution of 1:100. Blue: DAPI for nuclear staining.