

# Phospho-EEF2-T56 Rabbit Polyclonal Antibody



CABP0832

---

## Product Information

### Size:

20uL, 50uL, 100uL, 200uL

### Observed MW:

105kDa

### Calculated MW:

95kDa

### Applications:

WB

### Reactivity:

Human, Mouse, Rat

## Protein Background

This gene encodes a member of the GTP-binding translation elongation factor family. This protein is an essential factor for protein synthesis. It promotes the GTP-dependent translocation of the nascent protein chain from the A-site to the P-site of the ribosome. This protein is completely inactivated by EF-2 kinase phosphorylation.

## Immunogen information

### Gene ID:

1938

### Uniprot

P13639

### Synonyms:

EEF2; EEF-2; EF-2; EF2; SCA26

## Antibody Information

### Recommended dilutions:

WB 1:500 - 1:2000

### Source:

Rabbit

### Isotype:

IgG

### Purification:

Affinity purification

### Immunogen:

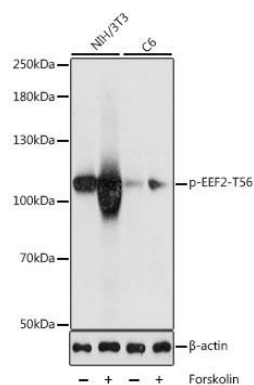
A synthetic phosphorylated peptide around T56 of human EEF2 (NP\_001952.1).

### Storage:

Store at -20°C. Avoid freeze / thaw cycles. Buffer: PBS with 0.02% sodium azide, 50% glycerol, pH7.3.

## Product Images

---



Western blot analysis of extracts of various cell lines, using Phospho-EEF2-T56 antibody (CABP0832) at 1:1000 dilution. NIH/3T3 cells were treated by Forskolin (30uM) for 30 minutes after serum-starvation overnight. C6 cells were treated by Forskolin (10uM) for 1 hour after serum-starvation overnight. Secondary antibody: HRP Goat Anti-Rabbit IgG (H+L) (CABS014) at 1:10000 dilution. Lysates/proteins: 25ug per lane. Blocking buffer: 3% BSA. Detection: ECL Basic Kit (CABM00020). Exposure time: 5s.