

Phospho-FANCG-S383 Rabbit Polyclonal Antibody

CABP0833



Product Information

Size:

20uL, 50uL, 100uL, 200uL

Observed MW:**Calculated MW:**

68kDa

Applications:

IF

Reactivity:

Human

Protein Background

The Fanconi anemia complementation group (FANC) currently includes FANCA, FANCB, FANCC, FANCD1 (also called BRCA2), FANCD2, FANCE, FANCF, FANCG, FANCI, FANCI (also called BRIP1), FANCL, FANCM and FANCN (also called PALB2). The previously defined group FANCH is the same as FANCA. Fanconi anemia is a genetically heterogeneous recessive disorder characterized by cytogenetic instability, hypersensitivity to DNA crosslinking agents, increased chromosomal breakage, and defective DNA repair. The members of the Fanconi anemia complementation group do not share sequence similarity; they are related by their assembly into a common nuclear protein complex. This gene encodes the protein for complementation group G.

Immunogen information

Gene ID:

2189

Uniprot

O15287

Antibody Information

Recommended dilutions:

IF 1:50 - 1:200

Source:

Rabbit

Isotype:

IgG

Purification:

Affinity purification

Synonyms:

FANCG; FAG; XRCC9

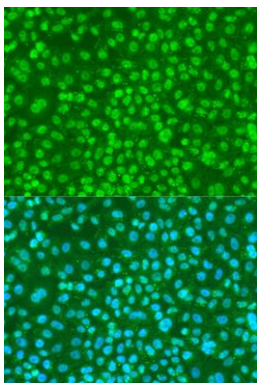
Immunogen:

A synthetic phosphorylated peptide around S383 of human FANCG (NP_004620.1).

Storage:

Store at -20°C. Avoid freeze / thaw cycles. Buffer: PBS with 0.02% sodium azide, 50% glycerol, pH7.3.

Product Images



Immunofluorescence analysis of U2OS cells using Phospho-FANCG-S383 antibody (CABP0833) at dilution of 1:100. Blue: DAPI for nuclear staining.