

Phospho-PPIG-S376 Rabbit Polyclonal Antibody



CABP0842

Product Information

Size:

20uL, 50uL, 100uL, 200uL

Observed MW:

110kDa

Calculated MW:

40kDa/88kDa

Applications:

WB

Reactivity:

Human, Mouse, Rat

Protein Background

PPIase that catalyzes the cis-trans isomerization of proline imidic peptide bonds in oligopeptides and may therefore assist protein folding (PubMed:20676357). May be implicated in the folding, transport, and assembly of proteins. May play an important role in the regulation of pre-mRNA splicing.

Immunogen information

Gene ID:

9360

Uniprot

Q13427

Synonyms:

PPIG; CARS-Cyp; CYP; SCAF10; SRCyp

Antibody Information

Recommended dilutions:

WB 1:500 - 1:2000

Source:

Rabbit

Isotype:

IgG

Purification:

Affinity purification

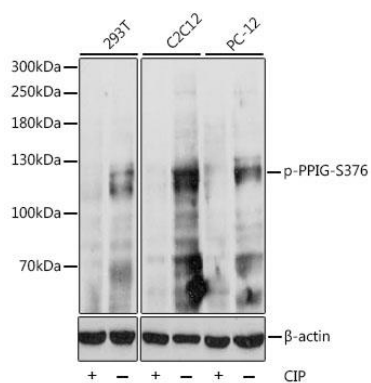
Immunogen:

A synthetic phosphorylated peptide around S376 of human PPIG (NP_004783.2).

Storage:

Store at -20°C. Avoid freeze / thaw cycles. Buffer: PBS with 0.02% sodium azide, 50% glycerol, pH7.3.

Product Images



Western blot analysis of extracts of various cell lines, using Phospho-PPIG-S376 antibody (CABP0842) at 1:1000 dilution. 293T cell lysate were treated by CIP (20ul CIP for each 400ul cell lysate) at 37°C for 1 hour. C2C12 cell lysate were treated by CIP (20ul CIP for each 400ul cell lysate) at 37°C for 1 hour. PC-12 cell lysate were treated by CIP (20ul CIP for each 400ul cell lysate) at 37°C for 1 hour. Secondary antibody: HRP Goat Anti-Rabbit IgG (H+L) (CABS014) at 1:10000 dilution. Lysates/proteins: 25ug per lane. Blocking buffer: 3% BSA. Detection: ECL Basic Kit (CABM00020). Exposure time: 90s.