

Phospho-SF3B1-T313 Rabbit Polyclonal Antibody



CABP0844

Product Information

Size:

20uL, 50uL, 100uL, 200uL

Observed MW:

155kDa

Calculated MW:

16kDa/145kDa

Applications:

WB

Reactivity:

Human, Mouse, Rat

Antibody Information

Recommended dilutions:

WB 1:500 - 1:2000

Source:

Rabbit

Isotype:

IgG

Purification:

Affinity purification

Protein Background

This gene encodes subunit 1 of the splicing factor 3b protein complex. Splicing factor 3b, together with splicing factor 3a and a 12S RNA unit, forms the U2 small nuclear ribonucleoproteins complex (U2 snRNP). The splicing factor 3b/3a complex binds pre-mRNA upstream of the intron's branch site in a sequence independent manner and may anchor the U2 snRNP to the pre-mRNA. Splicing factor 3b is also a component of the minor U12-type spliceosome. The carboxy-terminal two-thirds of subunit 1 have 22 non-identical, tandem HEAT repeats that form rod-like, helical structures. Alternative splicing results in multiple transcript variants encoding different isoforms.

Immunogen information

Gene ID:

23451

Uniprot

O75533

Synonyms:

SF3B1; Hsh155; MDS; PRP10; PRPF10; SAP155; SF3b155

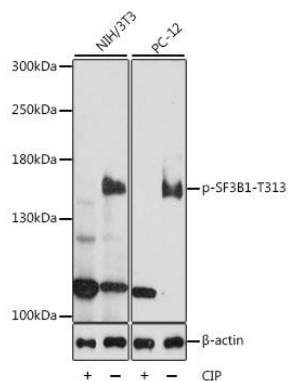
Immunogen:

A synthetic phosphorylated peptide around T313 of human SF3B1 (NP_036565.2).

Storage:

Store at -20°C. Avoid freeze / thaw cycles. Buffer: PBS with 0.02% sodium azide, 50% glycerol, pH7.3.

Product Images



Western blot analysis of extracts of various cell lines, using Phospho-SF3B1-T313 antibody (CABP0844) at 1:1000 dilution. NIH 3T3 cell lysate were treated by CIP (20ul CIP for each 400ul cell lysate) at 37'C for 1 hour. PC-12 cell lysate were treated by CIP (20ul CIP for each 400ul cell lysate) at 37'C for 1 hour. Secondary antibody: HRP Goat Anti-Rabbit IgG (H+L) (CABS014) at 1:10000 dilution. Lysates/proteins: 25ug per lane. Blocking buffer: 3% BSA. Detection: ECL Basic Kit (CABM00020). Exposure time: 90s.