

Phospho-EEF2K-S366 Rabbit Polyclonal Antibody



CABP0845

Product Information

Size:

20uL, 50uL, 100uL, 200uL

Observed MW:

110kDa

Calculated MW:

82kDa

Applications:

WB

Reactivity:

Human, Mouse, Rat

Protein Background

This gene encodes a highly conserved protein kinase in the calmodulin-mediated signaling pathway that links activation of cell surface receptors to cell division. This kinase is involved in the regulation of protein synthesis. It phosphorylates eukaryotic elongation factor 2 (EEF2) and thus inhibits the EEF2 function. The activity of this kinase is increased in many cancers and may be a valid target for anti-cancer treatment.

Immunogen information

Gene ID:

29904

Uniprot

O00418

Synonyms:

EEF2K; HSU93850; eEF-2K

Antibody Information

Recommended dilutions:

WB 1:500 - 1:2000

Source:

Rabbit

Isotype:

IgG

Purification:

Affinity purification

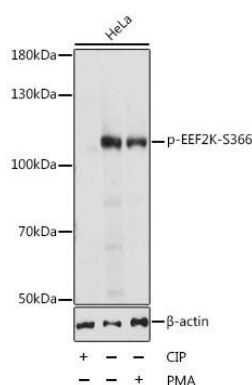
Immunogen:

A synthetic phosphorylated peptide around S366 of human EEF2K (NP_037434.1).

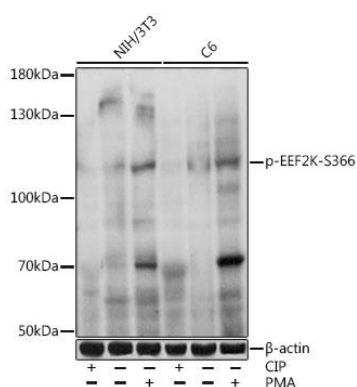
Storage:

Store at -20°C. Avoid freeze / thaw cycles. Buffer: PBS with 0.02% sodium azide, 50% glycerol, pH7.3.

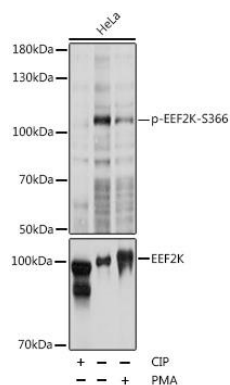
Product Images



Western blot analysis of extracts of HeLa cells, using Phospho-EEF2K-S366 antibody (CABP0845) at 1:1000 dilution. HeLa cell lysate were treated by CIP (20ul CIP for each 400ul cell lysate) at 37'C for 1 hour or treated by PMA/TPA (200nM) for 15 minutes after serum-starvation overnight. Secondary antibody: HRP Goat Anti-Rabbit IgG (H+L) (CABS014) at 1:10000 dilution. Lysates/proteins: 25ug per lane. Blocking buffer: 3% BSA. Detection: ECL Basic Kit (CABM00020). Exposure time: 15s.



Western blot analysis of extracts of various cell lines, using Phospho-EEF2K-S366 antibody (CABP0845) at 1:1000 dilution. NIH/3T3 and C6 cells were treated by CIP(20uL/400ul) at 37'C for 1 hour or PMA/TPA (200 nM) at 37'C for 30 minutes after serum-starvation overnight. Secondary antibody: HRP Goat Anti-Rabbit IgG (H+L) (CABS014) at 1:10000 dilution. Lysates/proteins: 25ug per lane. Blocking buffer: 3% nonfat dry milk in TBST. Detection: ECL Basic Kit (CABM00020). Exposure time: 30s.



Western blot analysis of extracts of HeLa cells, using Phospho-EEF2K-S366 pAb (CABP0845) at 1:1000 dilution or EEF2K antibody (CAB5404). HeLa cell lysate were treated by CIP (20ul CIP for each 400ul cell lysate) at 37'C for 1 hour or treated by PMA/TPA (200nM) for 15 minutes after serum-starvation overnight. Secondary antibody: HRP Goat Anti-Rabbit IgG (H+L) (CABS014) at 1:10000 dilution. Lysates/proteins: 25ug per lane. Blocking buffer: 3% BSA. Detection: ECL Basic Kit (CABM00020). Exposure time: 15s.