

Phospho-HSL-S563 Rabbit Polyclonal Antibody



CABP0851

Product Information

Size:

20uL, 50uL, 100uL, 200uL

Observed MW:

81kDa/83kDa

Calculated MW:

84kDa/116kDa

Applications:

WB

Reactivity:

Mouse, Rat

Protein Background

The protein encoded by this gene has a long and a short form, generated by use of alternative translational start codons. The long form is expressed in steroidogenic tissues such as testis, where it converts cholesteryl esters to free cholesterol for steroid hormone production. The short form is expressed in adipose tissue, among others, where it hydrolyzes stored triglycerides to free fatty acids.

Immunogen information

Gene ID:

3991

Uniprot

Q05469

Synonyms:

LIPE; AOMS4; FPLD6; HSL; LHS

Antibody Information

Recommended dilutions:

WB 1:500 - 1:2000

Source:

Rabbit

Isotype:

IgG

Purification:

Affinity purification

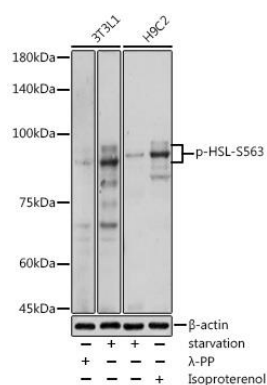
Immunogen:

A phospho specific peptide corresponding to residues surrounding S853 of human HSL (NP_005348.2 , equivalent to S563 of rat HSL

Storage:

Store at -20°C. Avoid freeze / thaw cycles. Buffer: PBS with 0.02% sodium azide, 50% glycerol, pH7.3.

Product Images



Western blot analysis of extracts of various cell lines, using Phospho-HSL-S563 antibody (CABP0851) at 1:1000 dilution. 3T3L1 cells were treated by lamda-PP mixed solution (1ul) at 30'C for 30 minutes. H9C2 cells were treated with Isoproterenol (10 uM for 20 min) at 37'C. Secondary antibody: HRP Goat Anti-Rabbit IgG (H+L) (CABS014) at 1:10000 dilution. Lysates/proteins: 25ug per lane. Blocking buffer: 3% nonfat dry milk in TBST. Detection: ECL Basic Kit (CABM00020). Exposure time: 180s.