

Phospho-PI3KP85Alpha/Gamma/Beta- Y467/Y199/Y464 Rabbit Polyclonal Antibody CABP0854



Product Information

Size:

20uL, 50uL, 100uL, 200uL

Observed MW:

70kDa/75kDa

Calculated MW:

42-54kDa/81-84kDa

Applications:

WB

Reactivity:

Human, Mouse, Rat

Antibody Information

Recommended dilutions:

WB 1:500 - 1:2000

Source:

Rabbit

Isotype:

IgG

Purification:

Affinity purification

Protein Background

Phosphatidylinositol 3-kinase phosphorylates the inositol ring of phosphatidylinositol at the 3-prime position. The enzyme comprises a 110 kD catalytic subunit and a regulatory subunit of either 85, 55, or 50 kD. This gene encodes the 85 kD regulatory subunit. Phosphatidylinositol 3-kinase plays an important role in the metabolic actions of insulin, and a mutation in this gene has been associated with insulin resistance. Alternative splicing of this gene results in four transcript variants encoding different isoforms. [provided by RefSeq, Jun 2011]

Immunogen information

Gene ID:

5295/5296/8503

Uniprot

P27986/O00459/Q92569

Synonyms:

PIK3R1/PIK3R2/PIK3R3

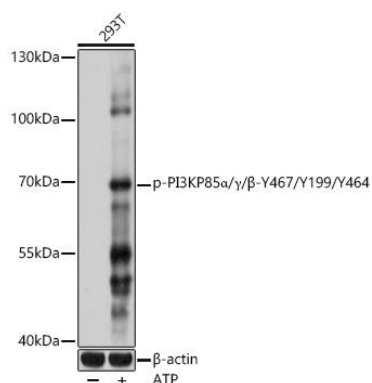
Immunogen:

A synthetic phosphorylated peptide around Y467/Y199/Y464 of human p85-alpha (NP_852664.1).

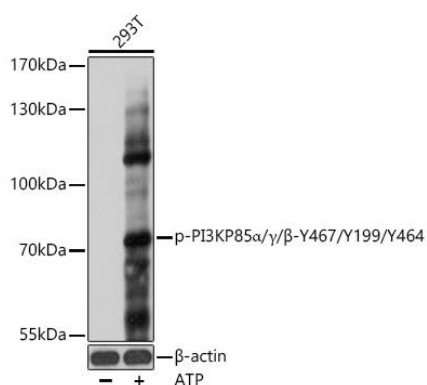
Storage:

Store at -20°C. Avoid freeze / thaw cycles. Buffer: PBS with 0.02% sodium azide, 50% glycerol, pH7.3.

Product Images



Western blot analysis of extracts of 293T cells, using Phospho-PI3KP85 α /b/ γ -Y467/Y199/Y464 antibody (CABP0854) at 1:1000 dilution. 293T cells were treated by ATP (5 mM) at 30°C for 1 hour. Secondary antibody: HRP Goat Anti-Rabbit IgG (H+L) (CABS014) at 1:10000 dilution. Lysates/proteins: 25 μ g per lane. Blocking buffer: 3% BSA. Detection: ECL Basic Kit (CABM00020). Exposure time: 1s.



Western blot analysis of extracts of 293T cells, using Phospho-PI3KP85 α /g/b-Y467/Y199/Y464 antibody (CABP0854) at 1:1000 dilution. 293T cells were treated by ATP (5 mM) at 30°C for 1 hour. Secondary antibody: HRP Goat Anti-Rabbit IgG (H+L) (CABS014) at 1:10000 dilution. Lysates/proteins: 25 μ g per lane. Blocking buffer: 3% BSA. Detection: ECL Basic Kit (CABM00020). Exposure time: 1s.