

Phospho-Lyn-Y507 Rabbit Polyclonal Antibody



CABP0855

Product Information

Size:

20uL, 50uL, 100uL, 200uL

Observed MW:

56kDa/58kDa

Calculated MW:

56kDa/58kDa

Applications:

WB

Reactivity:

Human

Protein Background

This gene encodes a tyrosine protein kinase, which maybe involved in the regulation of mast cell degranulation, and erythroid differentiation. Alternatively spliced transcript variants encoding different isoforms have been found for this gene.

Immunogen information

Gene ID:

4067

Uniprot

P07948

Synonyms:

LYN; JTK8; p53Lyn; p56Lyn

Antibody Information

Recommended dilutions:

WB 1:500 - 1:2000

Source:

Rabbit

Isotype:

IgG

Purification:

Affinity purification

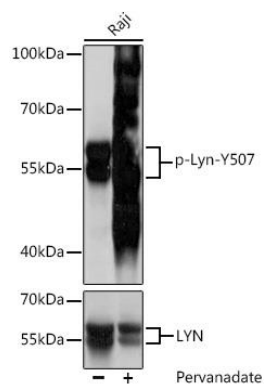
Immunogen:

A synthetic phosphorylated peptide around Y507 of human Lyn (NP_002341.1).

Storage:

Store at -20°C. Avoid freeze / thaw cycles. Buffer: PBS with 0.02% sodium azide, 50% glycerol, pH7.3.

Product Images



Western blot analysis of extracts of Raji cells, using Phospho-Lyn-Y507 antibody (CABP0855) at 1:1000 dilution or LYN antibody (CAB2093). Raji cells were treated by Pervanadate (1 mM) at 37°C for 30 minutes. Secondary antibody: HRP Goat Anti-Rabbit IgG (H+L) (CABS014) at 1:10000 dilution. Lysates/proteins: 25ug per lane. Blocking buffer: 3% BSA. Detection: ECL Basic Kit (CABM00020). Exposure time: 1s.