

# Phospho-FOXO3-S294 Rabbit Polyclonal Antibody

## CABP0856



### Product Information

**Size:**

20uL, 50uL, 100uL, 200uL

**Observed MW:**

82kDa

**Calculated MW:**

48kDa/71kDa

**Applications:**

WB

**Reactivity:**

Human, Mouse, Rat

### Protein Background

This gene belongs to the forkhead family of transcription factors which are characterized by a distinct forkhead domain. This gene likely functions as a trigger for apoptosis through expression of genes necessary for cell death. Translocation of this gene with the MLL gene is associated with secondary acute leukemia. Alternatively spliced transcript variants encoding the same protein have been observed.

### Immunogen information

**Gene ID:**

2309

**Uniprot**

O43524

**Synonyms:**

FOXO3; AF6q21; FKHL1; FKHL1P2; FOXO2; FOXO3A; FoxO3a

### Antibody Information

**Recommended dilutions:**

WB 1:500 - 1:2000

**Source:**

Rabbit

**Isotype:**

IgG

**Purification:**

Affinity purification

**Immunogen:**

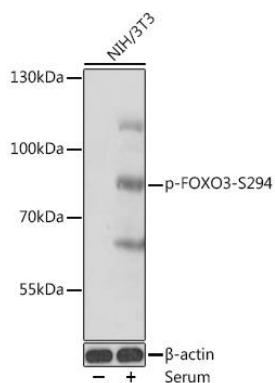
A synthetic phosphorylated peptide around S294 of human FOXO3 (NP\_001446.1).

**Storage:**

Store at -20°C. Avoid freeze / thaw cycles. Buffer: PBS with 0.02% sodium azide, 50% glycerol, pH7.3.

## Product Images

---



Western blot analysis of extracts of NIH/3T3 cells, using Phospho-FOXO3-S294 antibody (CABP0856) at 1:1000 dilution. NIH/3T3 cells were treated by 10% FBS at 37°C for 30 minutes after serum-starvation overnight. Secondary antibody: HRP Goat Anti-Rabbit IgG (H+L) (CABS014) at 1:10000 dilution. Lysates/proteins: 25ug per lane. Blocking buffer: 3% nonfat dry milk in TBST. Detection: ECL Basic Kit (CABM00020). Exposure time: 1s.