

Phospho-TSC2-T1462 Rabbit Polyclonal Antibody



CABP0866

Product Information

Size:

20uL, 50uL, 100uL, 200uL

Observed MW:

200kDa

Calculated MW:

25kDa/187-200kDa

Applications:

WB

Reactivity:

Human, Mouse

Protein Background

Mutations in this gene lead to tuberous sclerosis complex. Its gene product is believed to be a tumor suppressor and is able to stimulate specific GTPases. The protein associates with hamartin in a cytosolic complex, possibly acting as a chaperone for hamartin. Alternative splicing results in multiple transcript variants encoding different isoforms.

Immunogen information

Gene ID:

7249

Uniprot

P49815

Synonyms:

LAM; PPP1R160; TSC4; TSC2; Tuberin; tuberin

Antibody Information

Recommended dilutions:

WB 1:500 - 1:2000

Source:

Rabbit

Isotype:

IgG

Purification:

Affinity purification

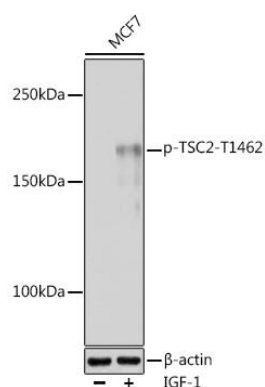
Immunogen:

A synthetic phosphorylated peptide around T1462 of human TSC2 (NP_000539.2).

Storage:

Store at -20°C. Avoid freeze / thaw cycles. Buffer: PBS with 0.02% sodium azide, 50% glycerol, pH7.3.

Product Images



Western blot analysis of extracts of MCF7 cells, using Phospho-TSC2-T1462 antibody (CABP0866) at 1:1000 dilution. MCF7 cells were treated by IGF-1 (50 ng/ml) at 37°C for 5 minutes after serum-starvation overnight. Secondary antibody: HRP Goat Anti-Rabbit IgG (H+L) (CABS014) at 1:10000 dilution. Lysates/proteins: 25ug per lane. Blocking buffer: 3% nonfat dry milk in TBST. Detection: ECL Basic Kit (CABM00020). Exposure time: 60s.