

Phospho-MYL9-S19 Rabbit Polyclonal Antibody



CABP0872

Product Information

Size:

20uL, 50uL, 100uL, 200uL

Observed MW:

19kDa

Calculated MW:

13kDa/19kDa

Applications:

WB

Reactivity:

Human, Mouse, Rat

Protein Background

Myosin, a structural component of muscle, consists of two heavy chains and four light chains. The protein encoded by this gene is a myosin light chain that may regulate muscle contraction by modulating the ATPase activity of myosin heads. The encoded protein binds calcium and is activated by myosin light chain kinase. Two transcript variants encoding different isoforms have been found for this gene.

Immunogen information

Gene ID:

10398

Uniprot

P24844

Synonyms:

MYL9; LC20; MLC-2C; MLC2; MRLC1; MYRL2

Antibody Information

Recommended dilutions:

WB 1:500 - 1:2000

Source:

Rabbit

Isotype:

IgG

Purification:

Affinity purification

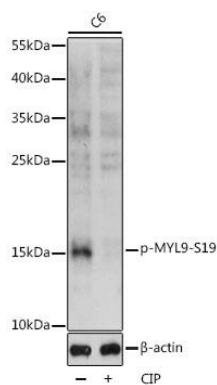
Immunogen:

A synthetic phosphorylated peptide around S19 of human MYL9 (NP_006088.2).

Storage:

Store at -20°C. Avoid freeze / thaw cycles. Buffer: PBS with 0.02% sodium azide, 50% glycerol, pH7.3.

Product Images



Western blot analysis of extracts of C6 cells, using Phospho-MYL9-S19 antibody (CABP0872) at 1:1000 dilution. C6 cells were treated by CIP(20uL/400ul) at 37'C for 1 hour. Secondary antibody: HRP Goat Anti-Rabbit IgG (H+L) (CABS014) at 1:10000 dilution. Lysates/proteins: 25ug per lane. Blocking buffer: 3% BSA. Detection: ECL Basic Kit (CABM00020). Exposure time: 90s.