

Phospho-GJA1-S368 Rabbit Polyclonal Antibody



CABP0876

Product Information

Size:

20uL, 50uL, 100uL, 200uL

Observed MW:

Refer to figures

Calculated MW:

43kDa

Applications:

IHC

Reactivity:

Mouse, Rat

Antibody Information

Recommended dilutions:

IHC 1:50 - 1:200

Source:

Rabbit

Isotype:

IgG

Purification:

Affinity purification

Protein Background

This gene is a member of the connexin gene family. The encoded protein is a component of gap junctions, which are composed of arrays of intercellular channels that provide a route for the diffusion of low molecular weight materials from cell to cell. The encoded protein is the major protein of gap junctions in the heart that are thought to have a crucial role in the synchronized contraction of the heart and in embryonic development. A related intronless pseudogene has been mapped to chromosome 5. Mutations in this gene have been associated with oculodentodigital dysplasia, autosomal recessive craniometaphyseal dysplasia and heart malformations.

Immunogen information

Gene ID:

2697

Uniprot

P17302

Synonyms:

GJA1; AVSD3; CMDR; CX43; EKVP; GJAL; HLHS1; HSS; ODDD; PPKCA; EKVP3

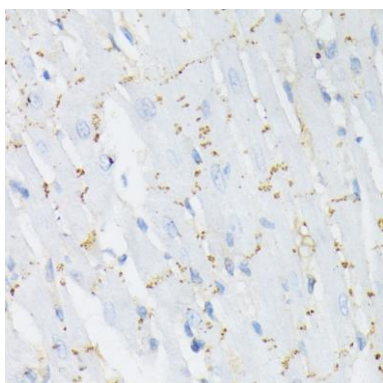
Immunogen:

A phospho specific peptide corresponding to residues surrounding S368 of human GJA1

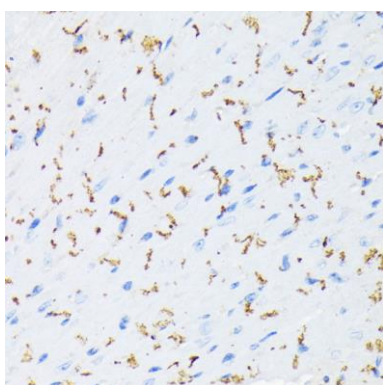
Storage:

Store at -20°C. Avoid freeze / thaw cycles. Buffer: PBS with 0.02% sodium azide, 50% glycerol, pH7.3.

Product Images



Immunohistochemistry of paraffin-embedded rat heart using Phospho-GJA1-S368 antibody (CABP0876) at dilution of 1:200 (40x lens).



Immunohistochemistry of paraffin-embedded mouse heart using Phospho-GJA1-S368 antibody (CABP0876) at dilution of 1:200 (40x lens).