

Phospho-IRE1alpha-S724 Rabbit Polyclonal Antibody

CABP0878



Product Information

Size:

20uL, 50uL, 100uL, 200uL

Observed MW:

130KDa

Calculated MW:

6kDa/109kDa

Applications:

WB IHC

Reactivity:

Human, Mouse, Rat

Protein Background

The protein encoded by this gene is the ER to nucleus signalling 1 protein, a human homologue of the yeast Ire1 gene product. This protein possesses intrinsic kinase activity and an endoribonuclease activity and it is important in altering gene expression as a response to endoplasmic reticulum-based stress signals.

Immunogen information

Gene ID:

2081

Uniprot

O75460

Synonyms:

ERN1; IRE1; IRE1P; IRE1a; hIRE1p

Antibody Information

Recommended dilutions:

WB 1:500 - 1:2000 IHC 1:50 - 1:200

Source:

Rabbit

Isotype:

IgG

Purification:

Affinity purification

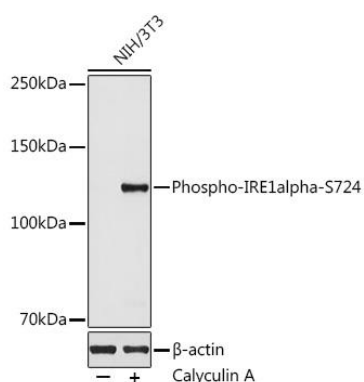
Immunogen:

A phospho specific peptide corresponding to residues surrounding s724 of human IRE1alpha.

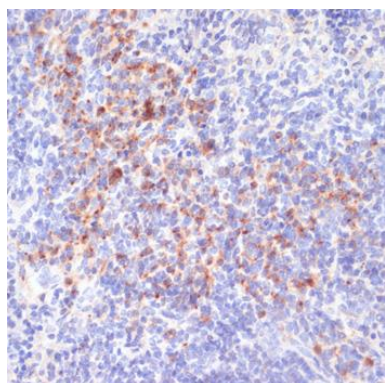
Storage:

Store at -20°C. Avoid freeze / thaw cycles. Buffer: PBS with 0.02% sodium azide, 50% glycerol, pH7.3.

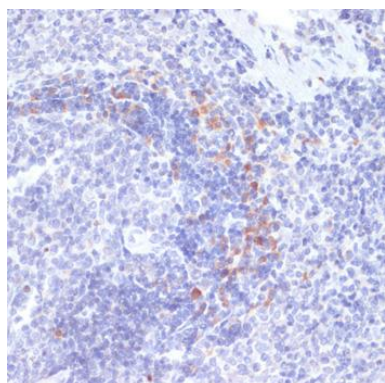
Product Images



Western blot analysis of extracts of NIH/3T3 cells, using Phospho-IRE1alpha-S724 antibody (CABP0878) at 1:500 dilution. NIH/3T3 cells were treated by Calyculin A (100 nM) at 37°C for 30 minutes after serum-starvation overnight. Secondary antibody: HRP Goat Anti-Rabbit IgG (H+L) (CABS014) at 1:10000 dilution. Lysates/proteins: 25ug per lane. Blocking buffer: 3% nonfat dry milk in TBST. Detection: ECL Basic Kit (CABM00020). Exposure time: 90s.



Immunohistochemistry of paraffin-embedded mouse spleen using Phospho-IRE1alpha(Ser724) antibody (CABP0878) at dilution of 1:100 (40x lens).



Immunohistochemistry of paraffin-embedded rat spleen using Phospho-IRE1alpha(Ser724) antibody (CABP0878) at dilution of 1:100 (40x lens).