

Phospho-FoxO1-T24/FoxO3a-T32/FoxO4-T28 Rabbit Polyclonal Antibody

CABP0892



Product Information

Size:

20uL, 50uL, 100uL, 200uL

Observed MW:

65kDa/78kDa

Calculated MW:

Applications:

WB IHC

Reactivity:

Human, Mouse, Rat

Antibody Information

Recommended dilutions:

WB 1:500 - 1:2000 IHC 1:50
- 1:200

Source:

Rabbit

Isotype:

IgG

Purification:

Affinity purification

Protein Background

This gene belongs to the forkhead family of transcription factors which are characterized by a distinct forkhead domain. The specific function of this gene has not yet been determined; however, it may play a role in myogenic growth and differentiation. Translocation of this gene with PAX3 has been associated with alveolar rhabdomyosarcoma. [provided by RefSeq, Jul 2008]

Immunogen information

Gene ID:

2308/2309/4303

Uniprot

Q12778/O43524

Synonyms:

FoxO1/FoxO3a/FoxO4

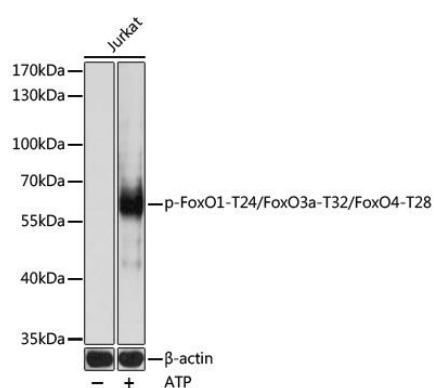
Immunogen:

A phospho synthetic peptide corresponding to residues surrounding T24/T32/T28 of human FoxO1/FoxO3a/FoxO4.

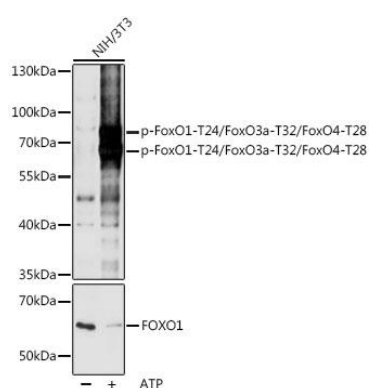
Storage:

Store at -20°C. Avoid freeze / thaw cycles. Buffer: PBS with 0.02% sodium azide, 50% glycerol, pH7.3.

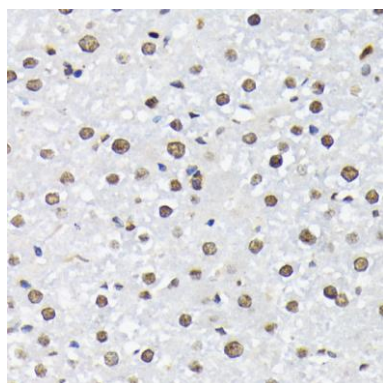
Product Images



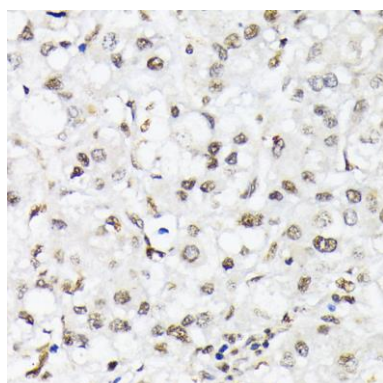
Western blot analysis of extracts of Jurkat cells, using Phospho-FoxO1-T24/FoxO3a-T32/FoxO4-T28 pAb (CABP0892) at 1:1000 dilution. Jurkat cells were treated by ATP (5 mM) at 30°C for 1 hour. Secondary antibody: HRP Goat Anti-Rabbit IgG (H+L) (CABS014) at 1:10000 dilution. Lysates/proteins: 25ug per lane. Blocking buffer: 3% BSA. Detection: ECL Basic Kit (CABM00020). Exposure time: 30s.



Western blot analysis of extracts of NIH/3T3 cells, using Phospho-FoxO1-T24/FoxO3a-T32/FoxO4-T28 pAb (CABP0892) at 1:1000 dilution or FOXO1 antibody (CAB13862). NIH/3T3 cells were treated by ATP (5 mM) at 30°C for 1 hour. Secondary antibody: HRP Goat Anti-Rabbit IgG (H+L) (CABS014) at 1:10000 dilution. Lysates/proteins: 25ug per lane. Blocking buffer: 3% BSA. Detection: ECL Basic Kit (CABM00020). Exposure time: 30s.



Immunohistochemistry of paraffin-embedded rat liver using Phospho-FoxO1-T24/FoxO3a-T32/FoxO4-T28 antibody (CABP0892) at dilution of 1:200 (40x lens).



Immunohistochemistry of paraffin-embedded human liver cancer using Phospho-FoxO1-T24/FoxO3a-T32/FoxO4-T28 antibody (CABP0892) at dilution of 1:200 (40x lens).