

# Phospho-IGF1R-Y1165/1166/INSR-Y1189/1190 Rabbit Polyclonal Antibody CABP0902



## Product Information

### Size:

20uL, 50uL, 100uL, 200uL

### Observed MW:

125kDa

### Calculated MW:

154kDa/155kDa/156kDa

### Applications:

WB

### Reactivity:

Human, Mouse, Rat

## Antibody Information

### Recommended dilutions:

WB 1:500 - 1:2000

### Source:

Rabbit

### Isotype:

IgG

### Purification:

Affinity purification

## Protein Background

This receptor binds insulin-like growth factor with a high affinity. It has tyrosine kinase activity. The insulin-like growth factor I receptor plays a critical role in transformation events. Cleavage of the precursor generates alpha and beta subunits. It is highly overexpressed in most malignant tissues where it functions as an anti-apoptotic agent by enhancing cell survival. Alternatively spliced transcript variants encoding distinct isoforms have been found for this gene. [provided by RefSeq, May 2014]

## Immunogen information

### Gene ID:

3480/3643

### Uniprot

P08069/P06213

### Synonyms:

IGF1R/INSR

### Immunogen:

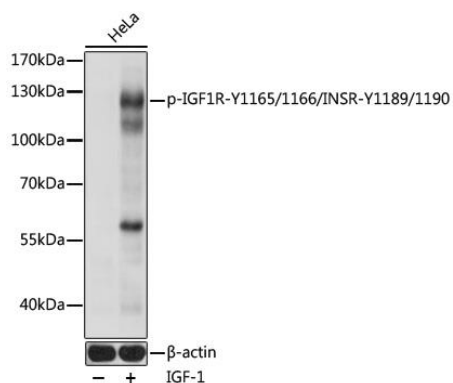
A phospho specific peptide corresponding to residues surrounding Y1165/1166 of human INSR and Y1131 of human IGF1R

### Storage:

Store at -20°C. Avoid freeze / thaw cycles. Buffer: PBS with 0.02% sodium azide, 50% glycerol, pH7.3.

## Product Images

---



Western blot analysis of extracts of HeLa cells, using Phospho-IGF1R-Y1165/1166/INSR-Y1189/1190 pAb (CABP0902) at 1:1000 dilution. HeLa cells were treated by IGF-1 (50 ng/mL) at 37°C for 30 minutes after serum-starvation overnight. Secondary antibody: HRP Goat Anti-Rabbit IgG (H+L) (CABS014) at 1:10000 dilution. Lysates/proteins: 25ug per lane. Blocking buffer: 3% BSA. Detection: ECL Basic Kit (CABM00020). Exposure time: 1s.