

Pan Phospho-Tyrosine Rabbit Polyclonal Antibody

CABP0905



Product Information

Size:

20uL, 50uL, 100uL, 200uL

Observed MW:

20-70KDa

Calculated MW:**Applications:**

WB IF IP

Reactivity:

Human, Mouse, Rat, Other
(Wide Range)

Antibody Information

Recommended dilutions:

WB 1:500 - 1:2000 IF 1:50 -
1:200 IP 1:50 - 1:200

Source:

Rabbit

Isotype:

IgG

Purification:

Affinity purification

Protein Background

Immunogen information

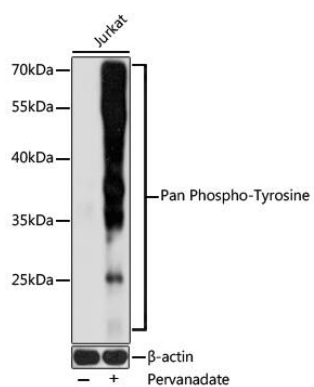
Gene ID:**Uniprot****Synonyms:****Immunogen:**

A synthetic peptide corresponding to a sequence containing phosphorylated Y.

Storage:

Store at -20°C. Avoid freeze / thaw cycles. Buffer: PBS with 0.02% sodium azide, 50% glycerol, pH7.3.

Product Images



Western blot - Pan Phospho-Tyrosine Rabbit pAb (CABP0905)