

Phospho-MST1/STK4-T387 Rabbit Polyclonal Antibody

CABP0906



Product Information

Size:

20uL, 50uL, 100uL, 200uL

Observed MW:

59kDa

Calculated MW:

59kDa

Applications:

WB

Reactivity:

Human, Mouse, Rat

Protein Background

The protein encoded by this gene is a cytoplasmic kinase that is structurally similar to the yeast Ste20p kinase, which acts upstream of the stress-induced mitogen-activated protein kinase cascade. The encoded protein can phosphorylate myelin basic protein and undergoes autophosphorylation. A caspase-cleaved fragment of the encoded protein has been shown to be capable of phosphorylating histone H2B. The particular phosphorylation catalyzed by this protein has been correlated with apoptosis, and it's possible that this protein induces the chromatin condensation observed in this process. [provided by RefSeq, Jul 2008]

Immunogen information

Gene ID:

6789

Uniprot

Q13043

Synonyms:

KRS2; MST1; YSK3; STK4

Antibody Information

Recommended dilutions:

WB 1:500 - 1:2000

Source:

Rabbit

Isotype:

IgG

Purification:

Affinity purification

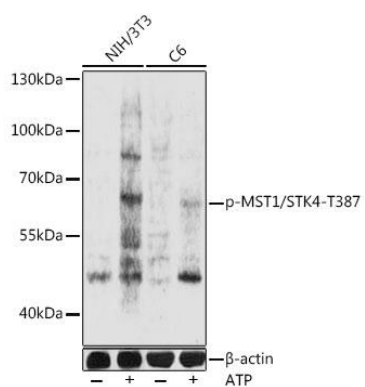
Immunogen:

A phospho specific peptide corresponding to residues surrounding T387 of human MST1/STK4.

Storage:

Store at -20°C. Avoid freeze / thaw cycles. Buffer: PBS with 0.02% sodium azide, 50% glycerol, pH7.3.

Product Images



Western blot - Phospho-MST1/STK4-T387 Rabbit pAb (CABP0906)