

# phospho-YAP1-S397 Rabbit Polyclonal Antibody



CABP0922

## Product Information

### Size:

20uL, 50uL, 100uL, 200uL

### Observed MW:

75kDa

### Calculated MW:

36kDa/48kDa/49kDa/50kDa/  
52kDa/53kDa/54kDa

### Applications:

WB

### Reactivity:

Human, Mouse, Rat

## Antibody Information

### Recommended dilutions:

WB 1:500 - 1:2000

### Source:

Rabbit

### Isotype:

IgG

### Purification:

Affinity purification

## Protein Background

This gene encodes a downstream nuclear effector of the Hippo signaling pathway which is involved in development, growth, repair, and homeostasis. This gene is known to play a role in the development and progression of multiple cancers as a transcriptional regulator of this signaling pathway and may function as a potential target for cancer treatment. Alternative splicing results in multiple transcript variants encoding different isoforms. [provided by RefSeq, Aug 2013]

## Immunogen information

### Gene ID:

10413

### Uniprot

P46937

### Synonyms:

COB1; YAP; YAP2; YAP65; YKI; YAP1

### Immunogen:

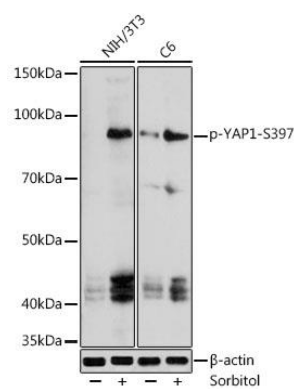
A phospho specific peptide corresponding to residues surrounding S397 of human YAP1.

### Storage:

Store at -20°C. Avoid freeze / thaw cycles. Buffer: PBS with 0.02% sodium azide, 50% glycerol, pH7.3.

## Product Images

---



Western blot - phospho-YAP1-S397 Rabbit pAb (CABP0922)