

# Phospho-PKM-Y105 Rabbit Polyclonal Antibody



CABP0924

## Product Information

### Size:

20uL, 50uL, 100uL, 200uL

### Observed MW:

58kDa

### Calculated MW:

58kDa

### Applications:

WB

### Reactivity:

Human, Mouse, Rat

## Antibody Information

### Recommended dilutions:

WB 1:500 - 1:2000

### Source:

Rabbit

### Isotype:

IgG

### Purification:

Affinity purification

## Protein Background

This gene encodes a protein involved in glycolysis. The encoded protein is a pyruvate kinase that catalyzes the transfer of a phosphoryl group from phosphoenolpyruvate to ADP, generating ATP and pyruvate. This protein has been shown to interact with thyroid hormone and may mediate cellular metabolic effects induced by thyroid hormones. This protein has been found to bind Opa protein, a bacterial outer membrane protein involved in gonococcal adherence to and invasion of human cells, suggesting a role of this protein in bacterial pathogenesis. Several alternatively spliced transcript variants encoding a few distinct isoforms have been reported.

## Immunogen information

### Gene ID:

5315

### Uniprot

P14618

### Synonyms:

CTHBP; HEL-S-30; OIP3; PK3; PKM2; TCB; THBP1; PKM

### Immunogen:

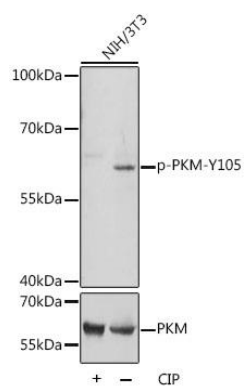
A phospho specific peptide corresponding to residues surrounding Y105 of human PKM.

### Storage:

Store at -20°C. Avoid freeze / thaw cycles. Buffer: PBS with 0.02% sodium azide, 50% glycerol, pH7.3.

## Product Images

---



Western blot - Phospho-PKM-Y105 Rabbit pAb (CABP0924)