

Phospho-ARHGEF2-S886 Rabbit Polyclonal Antibody

CABP0926



Product Information

Size:

20uL, 50uL, 100uL, 200uL

Observed MW:

120kDa

Calculated MW:

108kDa/111kDa

Applications:

WB

Reactivity:

Human, Mouse, Rat

Protein Background

Rho GTPases play a fundamental role in numerous cellular processes that are initiated by extracellular stimuli that work through G protein coupled receptors. The encoded protein may form complex with G proteins and stimulate rho-dependent signals. Alternatively spliced transcript variants encoding different isoforms have been identified.[provided by RefSeq, Jun 2009]

Immunogen information

Gene ID:

9181

Uniprot

Q92974

Synonyms:

GEF; GEF-H1; GEFH1; LFP40; P40; ARHGEF2; NEDMHM

Antibody Information

Recommended dilutions:

WB 1:500 - 1:2000

Source:

Rabbit

Isotype:

IgG

Purification:

Affinity purification

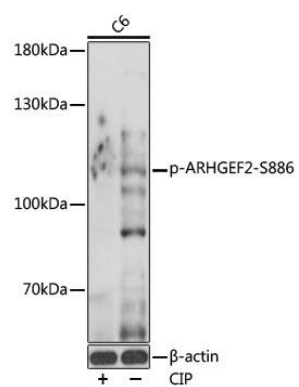
Immunogen:

A phospho specific peptide corresponding to residues surrounding S886 of human ARHGEF2

Storage:

Store at -20°C. Avoid freeze / thaw cycles. Buffer: PBS with 0.02% sodium azide, 50% glycerol, pH7.3.

Product Images



Western blot - Phospho-ARHGEF2-S886 Rabbit pAb (CABP0926)