

# Phospho-PPP2CA/PPP2CB-Y307 Rabbit Polyclonal Antibody

## CABP0927



### Product Information

**Size:**

20uL, 50uL, 100uL, 200uL

**Observed MW:**

38kDa

**Calculated MW:****Applications:**

WB

**Reactivity:**

Human, Mouse

### Protein Background

This gene encodes the phosphatase 2A catalytic subunit. Protein phosphatase 2A is one of the four major Ser/Thr phosphatases, and it is implicated in the negative control of cell growth and division. It consists of a common heteromeric core enzyme, which is composed of a catalytic subunit and a constant regulatory subunit, that associates with a variety of regulatory subunits. This gene encodes an alpha isoform of the catalytic subunit. [provided by RefSeq, Jul 2008]

### Immunogen information

**Gene ID:**

5515/5516

**Uniprot**

P67775/P62714

**Synonyms:**

PPP2CA/PPP2CB

### Antibody Information

**Recommended dilutions:**

WB 1:500 - 1:2000

**Source:**

Rabbit

**Isotype:**

IgG

**Purification:**

Affinity purification

**Immunogen:**

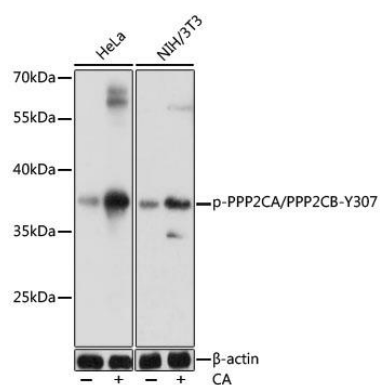
A phospho specific peptide corresponding to residues surrounding Y307 of human PPP2CA/PPP2CB

**Storage:**

Store at -20°C. Avoid freeze / thaw cycles. Buffer: PBS with 0.02% sodium azide, 50% glycerol, pH7.3.

## Product Images

---



Western blot - Phospho-PPP2CA/PPP2CB-Y307 Rabbit pAb (CABP0927)