

Phospho-(Ser/Thr) ATM/ATR Substrate Rabbit Polyclonal Antibody

CABP0933



Product Information

Size:

20uL, 50uL, 100uL, 200uL

Observed MW:

38-68KDa

Calculated MW:

Applications:

WB

Reactivity:

ALL

Antibody Information

Recommended dilutions:

WB 1:500 - 1:2000

Source:

Rabbit

Isotype:

IgG

Purification:

Affinity purification

Protein Background

Immunogen information

Gene ID:

Uniprot

Synonyms:

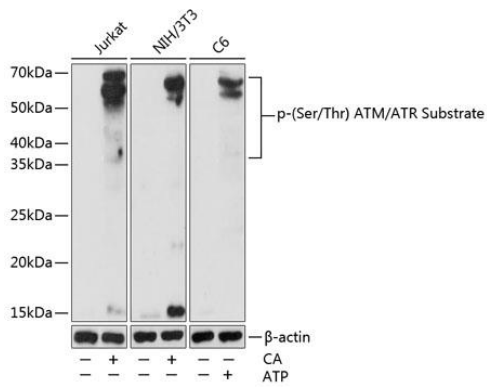
Immunogen:

A phospho specific peptide corresponding to residues surrounding Ser/Thr of ATM/ATR Substrate.

Storage:

Store at -20°C. Avoid freeze / thaw cycles. Buffer: PBS with 0.02% sodium azide, 50% glycerol, pH7.3.

Product Images



Western blot - Phospho-(Ser/Thr) ATM/ATR Substrate
Rabbit pAb (CABP0933)