

# Phospho-SMO-S611/615 Rabbit Polyclonal Antibody

CABP0939



## Product Information

### Size:

50uL, 100uL, 200uL

### Observed MW:

86kDa

### Calculated MW:

86kDa

### Applications:

WB

### Reactivity:

Human

## Protein Background

The protein encoded by this gene is a G protein-coupled receptor that interacts with the patched protein, a receptor for hedgehog proteins. The encoded protein transduces signals to other proteins after activation by a hedgehog protein/patched protein complex.

## Immunogen information

### Gene ID:

6608

### Uniprot

Q99835

### Synonyms:

Gx; CRJS; SMOH; FZD11; SMO

## Antibody Information

### Recommended dilutions:

WB 1:500 - 1:1000

### Source:

Rabbit

### Isotype:

IgG

### Purification:

Affinity purification

### Immunogen:

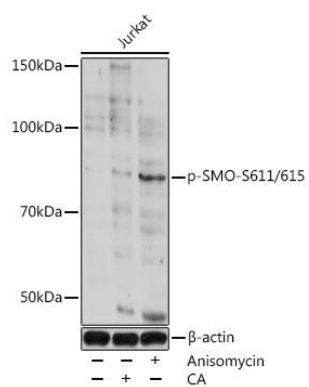
A synthetic phosphorylated peptide around S611/615 of human SMO.

### Storage:

Store at -20°C. Avoid freeze / thaw cycles. Buffer: PBS with 0.02% sodium azide, 50% glycerol, pH7.3.

## Product Images

---



Western blot - Phospho-SMO-S611/615 Rabbit pAb (CABP0939)