

Phospho-AURKA-T288/AURKB-T232/AURKC-T198 Rabbit Polyclonal Antibody

CABP0948



Product Information

Size:

20uL, 50uL, 100uL, 200uL

Observed MW:

35KkDa/48kDa

Calculated MW:

Applications:

WB

Reactivity:

Human, Rat

Antibody Information

Recommended dilutions:

WB 1:500 - 1:2000

Source:

Rabbit

Isotype:

IgG

Purification:

Affinity purification

Protein Background

The protein encoded by this gene is a cell cycle-regulated kinase that appears to be involved in microtubule formation and/or stabilization at the spindle pole during chromosome segregation. The encoded protein is found at the centrosome in interphase cells and at the spindle poles in mitosis. This gene may play a role in tumor development and progression. A processed pseudogene of this gene has been found on chromosome 1, and an unprocessed pseudogene has been found on chromosome 10. Multiple transcript variants encoding the same protein have been found for this gene. [provided by RefSeq, Jul 2008]

Immunogen information

Gene ID:

6790/9212/6795

Uniprot

O14965/Q96GD4/Q9UQB9

Synonyms:

AURKA/AURKB/AURKC

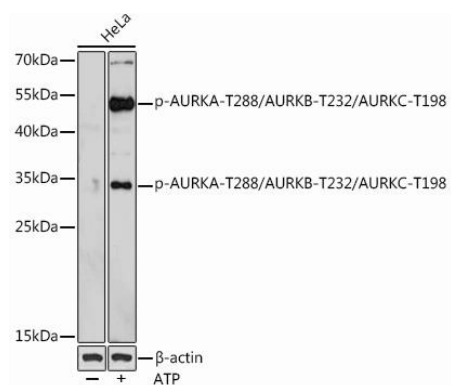
Immunogen:

A phospho specific peptide corresponding to residues surrounding T288/T232/T198 of human AURKA/AURKB/AURKC.

Storage:

Store at -20°C. Avoid freeze / thaw cycles. Buffer: PBS with 0.02% sodium azide, 50% glycerol, pH7.3.

Product Images



Western blot - Phospho-AURKA-T288/AURKB-T232/AURKC-T198 Rabbit pAb (CABP0948)